

# **CHILD PROTECTION AND SAFEGUARDING PERFORMANCE OVERVIEW**

## **Introduction**

This report provides a summary of Thurrock Children Social Care performance in respect of key indicators of child protection and safeguarding activity. The detailed tables and analysis that follow consider progress in relation to previous years and, where applicable, in comparison to other Local Authorities including Thurrock's nearest statistical neighbour authorities. The most recent available data used for the comparisons is for 2011-12.

## **Contacts**

Thurrock continues to see a high number of contacts. These are requests for service. In 2011-12 Thurrock received nearly 11,000 contacts. This represents a rate per 10,000 0-17 population of 2851. To date this year we have received nearly 8,000 and expect the year-end rate to be similar to last year.

Cases that proceed for allocation to social work teams are known as referrals. Thurrock received a total of 1391 referrals in 2011/12, equivalent to 361 referrals per 10,000 0-17 population. This rate remains below both the national average rate (534) and that of our nearest statistical neighbours (555) and has done so for the past two years. End of year forecasts indicate that the referral rate will again remain below average.

## **Referrals**

The level of contacts and the application of thresholds by the service that determine what cases progress as referrals continue to be subjected to robust scrutiny and assurance activity. Data on repeat referrals shows Thurrock over the past 3 years consistently below national and benchmark average. The results of audit activity also indicate that threshold application is consistent and appropriate.

Contact and referral rates also need to be considered in the context of both historical and current services available for children in the borough before they enter care proceedings. Thurrock is committed to the establishment of earlier targeted support to assist demand management, improve step-down arrangements and support the shift from a more threshold-based service to one that offers a more inclusive offer of earlier help for children and families, wider use of CAF and effective cooperation and partnership working across all agencies.

While we implement our service re-designs and plans for early offer of help, we are maintaining our focus on our 'front-door' arrangements for children's social care. We have identified several other factors which may be impacting on high levels of activity and which we are currently investigating further. These include; evidence of increasing numbers of re-constituted families with large sibling groups, families and young people with legacy of care involvement and perceived increase in the migration of families from east London into the borough.

## **Children Subject to Child Protection Plans**

The rate of children subject to child protection plans in Thurrock is high - 43 per 10,000 0-17 population in 2011-12 compared to average rates of 38 both nationally and among our statistical neighbours. Currently there are 217 children subject to child protection plans – a rate of 56.

The reasons for children being on Child Protection Plans are categorised by different forms of abuse - physical abuse, sexual abuse, neglect and emotional abuse. Thurrock does not have any particularly different pattern of need from other parts of the country with neglect featuring as a dominant risk to children. During the year, Thurrock has had to implement the Complex Abuse Child Protection Procedures on three occasions.  
Ask Neale

This reflects the pattern of high level of child protection investigation. In 2011-12 the rate of s47 investigations in Thurrock was 134 per 10,000 0-17 population. This compares to the national rate of 110 and statistical neighbour rate of 111.

## **Assessment and Review – Rates and Timescales**

Rates of initial assessments in Thurrock are in line with our referral rate but below both national and statistical neighbour rates. In 2011-12 Thurrock completed 336 initial assessments per 10,000 0-17 population compared to rates of 398 and 394 nationally and statistical neighbour. Projections for 2012-13 indicate that this pattern will continue. Compliance with timescales is strong. 95% of initials are completed within timescale, against a national average of 77% and statistical neighbour average of 76%.

In 2011-12 Thurrock completed 317 core assessments per 10,000 against a national average of 195 and statistical neighbour average of 209. Currently projections indicate that Thurrock's rate will rise further to 356 per 10,000. Timescales on cores are also strong. In 2011-12 93% were completed within 35 days in Thurrock against a national average of 76% and statistical neighbour average of 79%. The projected outturn for the current year shows a decrease in this performance to 84% - though remaining well above average.

The high level of core assessments has been investigated through independent and internal audit. This has shown the application of thresholds to be applied appropriately. As part of the service's ongoing quality assurance and performance analysis, other possible factors are being considered.

These include current practice of counting pre-birth assessments as core assessments (Thurrock completes a high number of pre-birth assessments) which is not necessarily the practice elsewhere. Also the requirement for a number of social work teams, including the Teams for Disabled Children and Adolescent Team completing and updating core assessments – again a practice that does not always happen elsewhere.

It is important that all child protection plans are reviewed (by multi agency case conferences) to ensure that they are being implemented and remain appropriate to a child's needs and assessed risk of significant harm. Also to determine whether any further actions are required. Thurrock also ensures that reviews are completed on a timely basis. 97% of children on plans are reviewed in timescale which is in line with the national average.

# **Child Protection Benchmarked Indicators**

**2007/8 – 2011/12**

Produced by  
Performance, Quality & Business Support Service  
(Updated 29/11/2012)

## Child Protection Benchmarks

Ref	Indicator Description	Next benchmark due	Good perf	Period of latest Benchmark data	Thurrock previous year	Thurrock latest Data	National average	SN average	Eastern Region average	Quartile	Direction of travel	National Rank
CP-1	Initial Assessments in 7 working days	N/A	H	10/11	73.50	73.50	64.29	59.05	68.08	2	↔	55/151
CP-2	Core Assessments in 35 days	Oct-13	H	11/12	87.20	93.11	75.50	78.72	73.44	1	↑	8/143
CP-3	Ceased to be subject of Child protection (CP for 2 years+)	Oct-13	L	11/12	8.60	12.20	5.60	6.87	4.80	4	↓	119/128
CP-4	CPR re registration	Oct-13	L	11/12	11.60	11.90	13.80	12.31	12.90	2	↓	60/145
CP-5	% of referrals of children in need that led to initial assessments	Oct-13		11/12	98.20	93.00	74.60	74.52	85.90			
CP-6	CPR reviewed on time	Oct-13	H	11/12	94.50	96.80	96.70	97.04	98.20	3	↑	110/150
CP-7	Children in Need (rate/10000)	Oct-13		11/12	318.90	650.30	651.90	629.02	579.30			
CP-8	Referrals (rate/10,000)	Oct-13		11/12	415.80	361.40	533.50	554.56	433.40	1		25/150
CP-9	Referrals that are repeat referrals	Oct-13	L	11/12	20.60	15.50	26.10	25.18	23.20	1	↑	17/140
CP-10	Initial Child protection Conferences (Rate per 10,000)	Oct-13	L	11/12	65.24	61.30	49.60	48.61	40.80	3	↑	102/146
CP-11	Core Assessments (Rate/10,000)	Oct-13		11/12	238.20	317.00	194.60	208.51	180.50			
CP-12	Subject to Child protection plan (Rate/10,000)	Oct-13		11/12	61.20	42.90	37.80	37.27	29.20			
CP-13	Became Subject to CPP (Rate/10,000)	Oct-13		11/12	57.50	50.40	46.00	45.72	38.40			
CP-14	Ceased to be Subject to CPP (Rate/10,000)	Oct-13	L	11/12	49.70	66.00	45.50	47.69	41.10	4	↓	127/149
CP-15	Initial Assessments (Rate/10,000)	Oct-13		11/12	408.50	335.90	398.10	393.35	372.40			
CP-16	Section 47 started (Rate/10,000)	Oct-13	L	11/12	118.18	134.30	109.90	110.69	108.10	3	↓	106/145
CP-18	ICPC within 15 days	Oct-13	H	11/12	96.30	91.90	72.30	68.11	80.10	1	↓	26/140
CP-19	Initial Assessments in 10 working days	Oct-13	H	11/12	79.30	95.40	77.40	76.27	75.60	1	↑	10/141

Please note that IAs within 7 days (CP-1) can no longer be calculated as the data is no longer available. This has been replaced by IAs within 10 days (CP-19).

# CP-7: Children in Need (rate/10000)

Ind Ref: CP-7

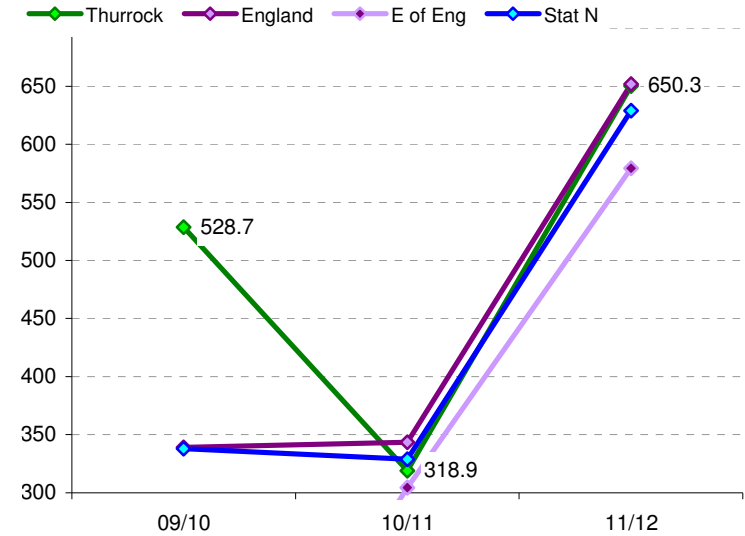
	09/10	10/11	11/12	dir	12/13
Thur Target					
Thurrock	528.7	318.9	650.3	↓	
England	339.0	343.4	651.9	↓	
E of Eng		304.5	579.3	↓	
Stat N	337.9	328.7	629.0	↓	

Head of Service: Barbara Foster  
 Responsible officer: Rubina Mazher  
 Reporting period: Financial Yr  
 Latest data period: 11/12  
 Next data due: Oct-13  
 Good perf is: LOW

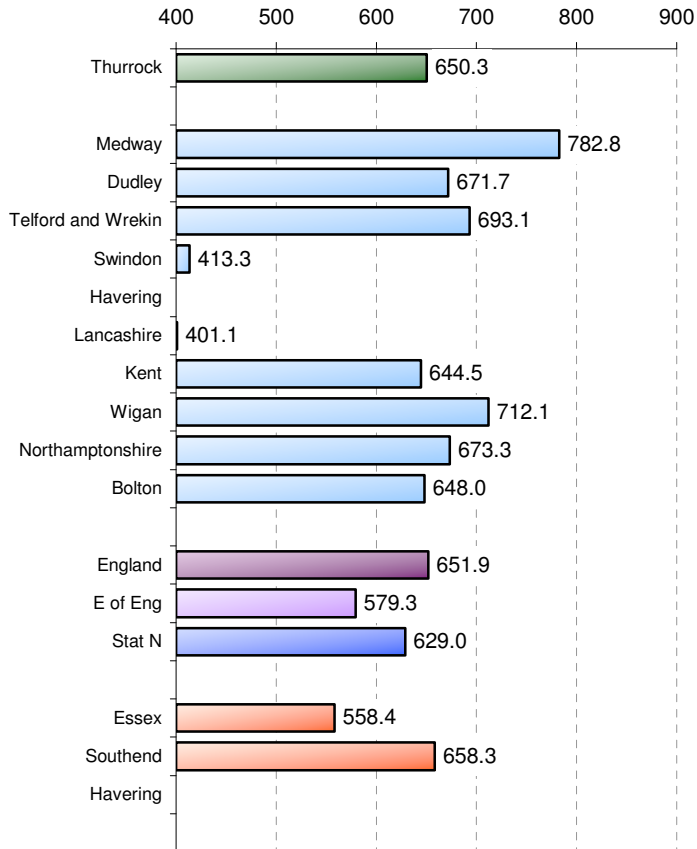
Rank (National) (/150)	115	54	70	↓
Rank (SN) (/11)	9	5	5	↔
Quartile	4	2	2	↔

Dif from National:	-189.7	24.5	1.6	
Dif from target:				

Trend data - Regional groups

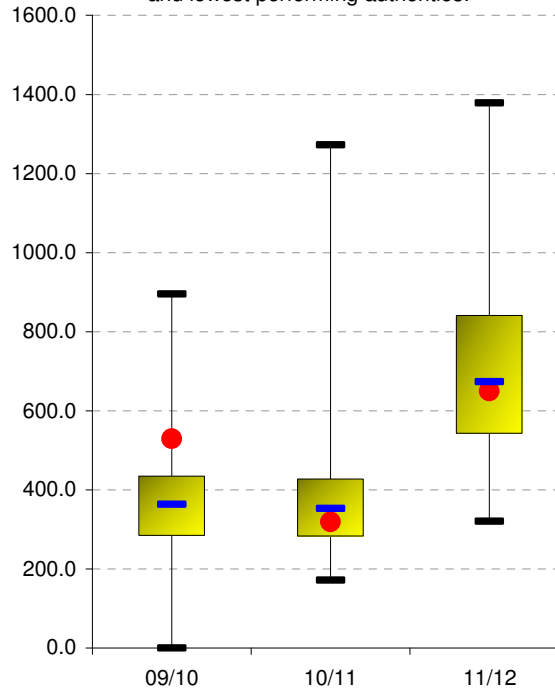


Performance comparison

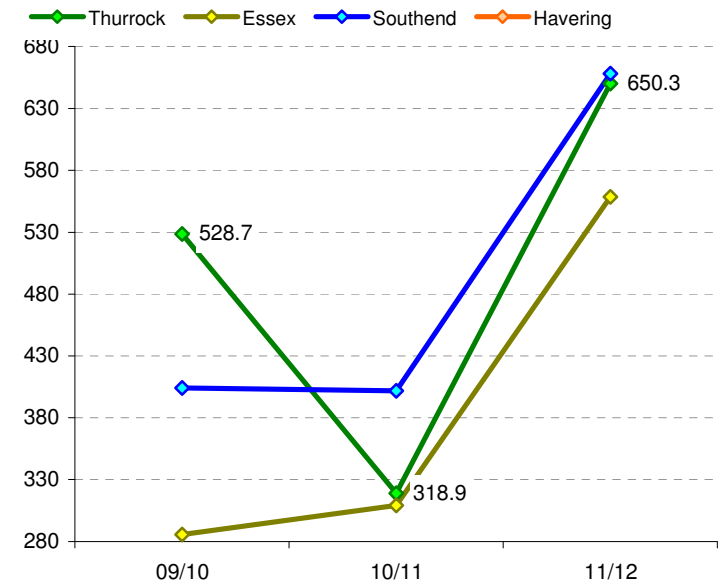


National Benchmarking

The red dot represents Thurrock's performance:  
 The solid block represents performance in the interquartile range:  
 The top and bottom bars represent the highest and lowest performing authorities.



Trend data - Local neighbours



# CP-8: Referrals (rate/10,000)

Ind Ref: CP-8

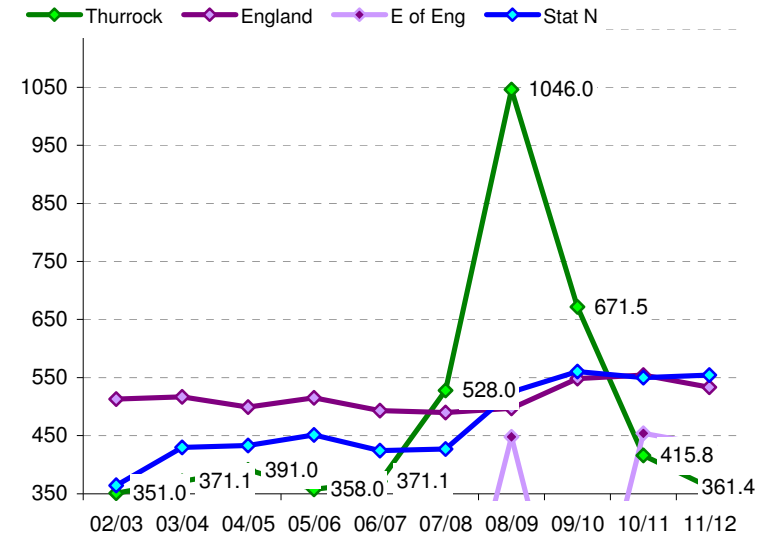
	07/08	08/09	09/10	10/11	11/12	dir	12/13
Thur Target				600.0	600.0		
Thurrock	528.0	1046.0	671.5	415.8	361.4	↑	
England	490.0	497.0	548.2	554.6	533.5	↑	
E of Eng		448.0		453.7	433.4	↑	
Stat N	426.8	525.2	560.5	550.1	554.6	↓	

Head of Service: Barbara Foster  
 Responsible officer: Rubina Mazher  
 Reporting period: Financial Yr  
 Latest data period: 11/12  
 Next data due: Oct-13  
 Good perf is: In Line

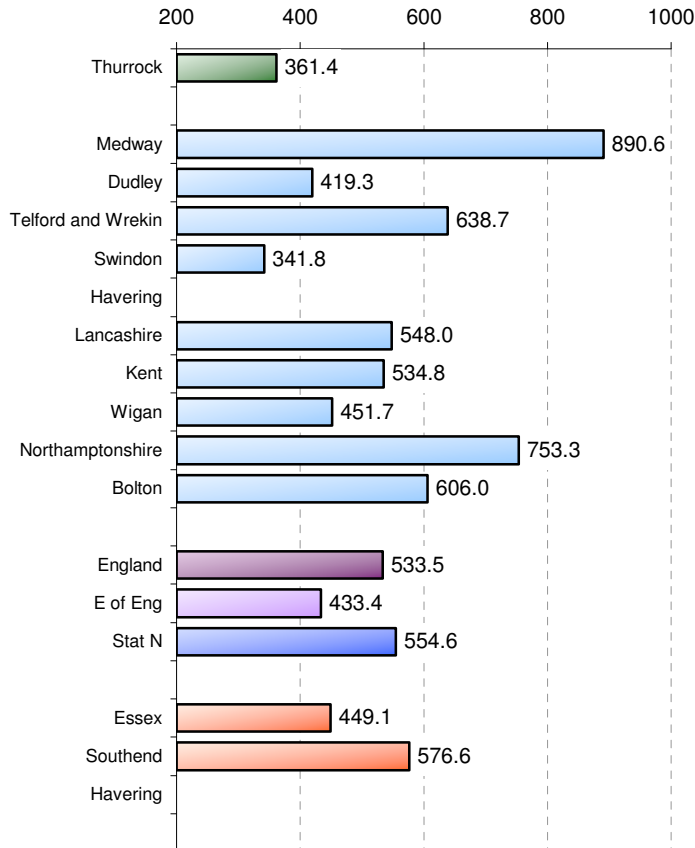
Rank (National) ( /150)	91	148	112	39	25	↑
Rank (SN) ( /11)	10	11	9	2	2	↔
Quartile	3	4	3	2	1	↑

Dif from National:	-38.0	-549.0	-123.3	138.8	172.1
Dif from target:				184.2	238.6

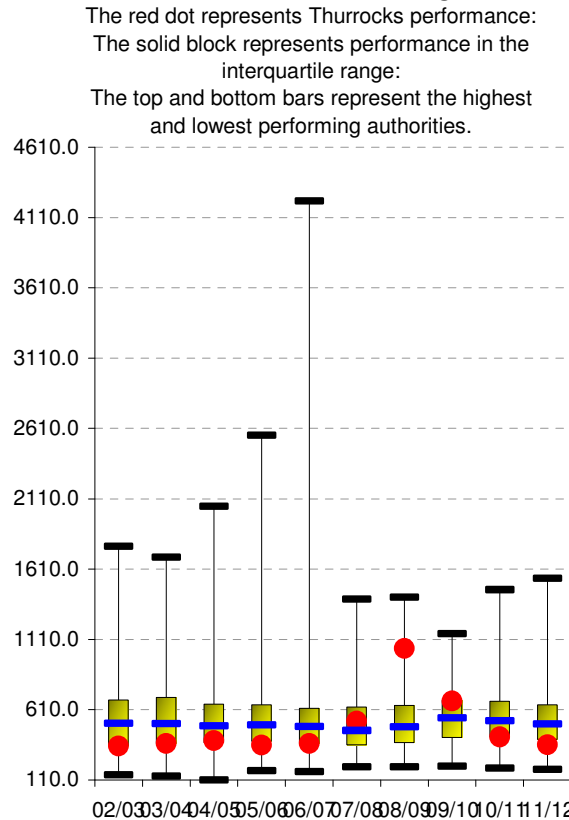
## Trend data - Regional groups



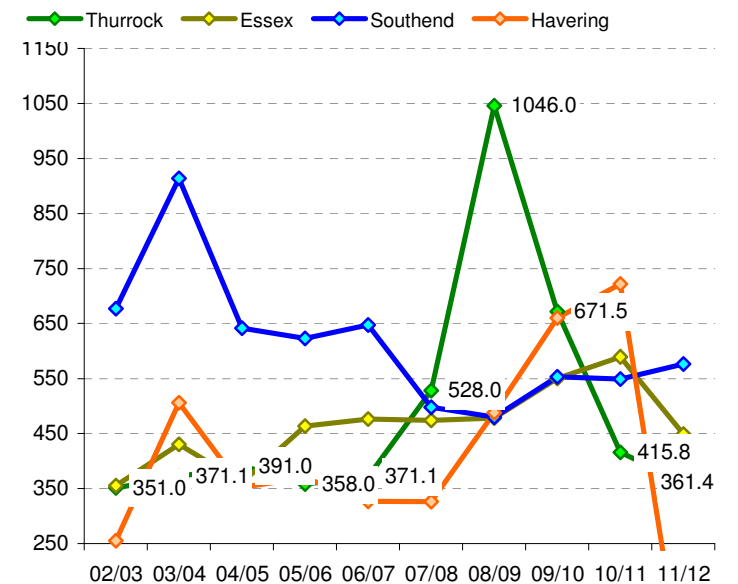
## Performance comparison



## National Benchmarking



## Trend data - Local neighbours



**CP-9: Referrals that are repeat referrals**  
**Ind Ref: CP-9**

	07/08	08/09	09/10	10/11	11/12	dir	12/13
Thur Target				24.0	24.0		
Thurrock	18.7	27.0	10.4	20.6	15.5	↑	
England	24.3	23.0	13.8	25.6	26.1	↓	
E of Eng		24.0		26.2	23.2	↑	
Stat N	22.3	22.2	12.7	21.9	25.2	↓	

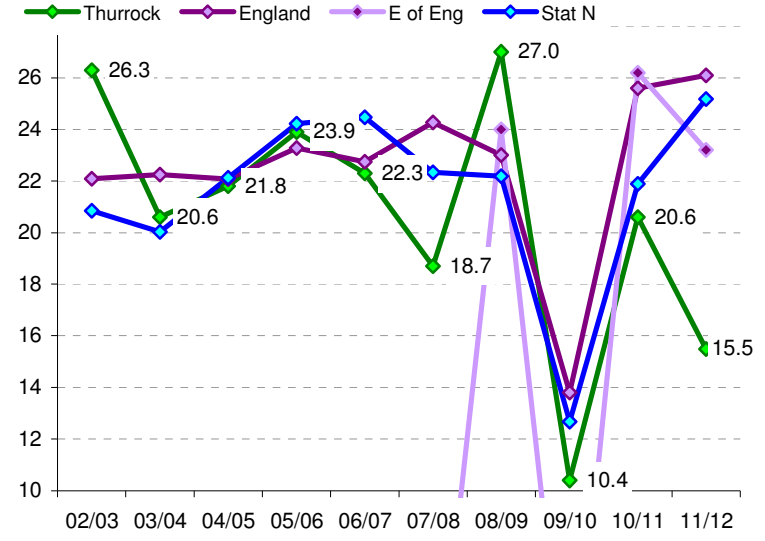
Rank (National) ( /140)	50	118	49	42	17	↑
Rank (SN) ( /11)	2	10	4	4	1	↑
Quartile	2	4	2	2	1	↑

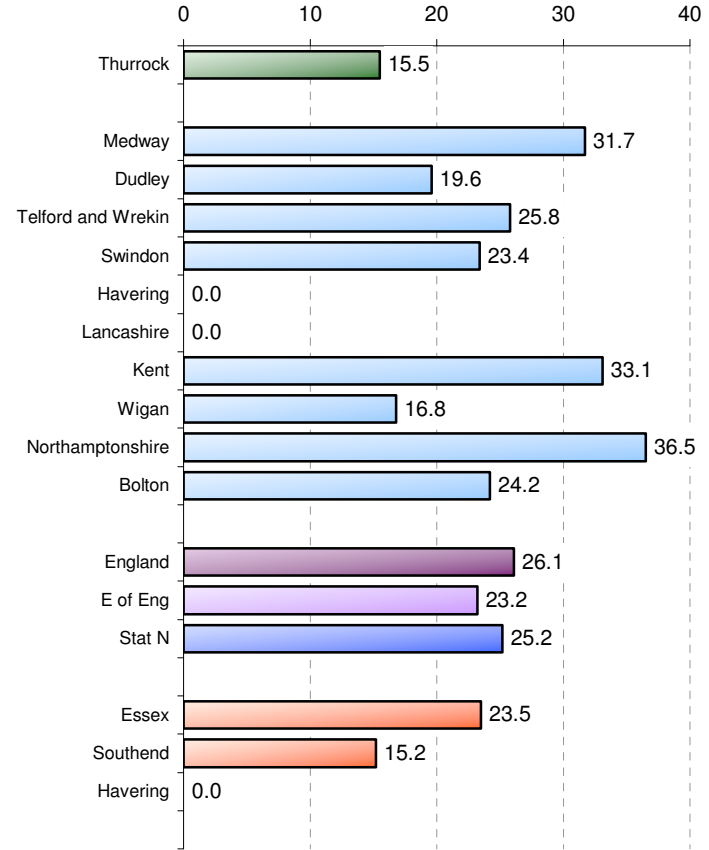
Dif from National:	5.6	-4.0	3.4	5.0	10.6
Dif from target:				3.4	8.5

Head of Service: Barbara Foster  
 Responsible officer: Rubina Mazher  
 Reporting period: Financial Yr  
 Latest data period: 11/12  
 Next data due: Oct-13  
 Good perf is: LOW

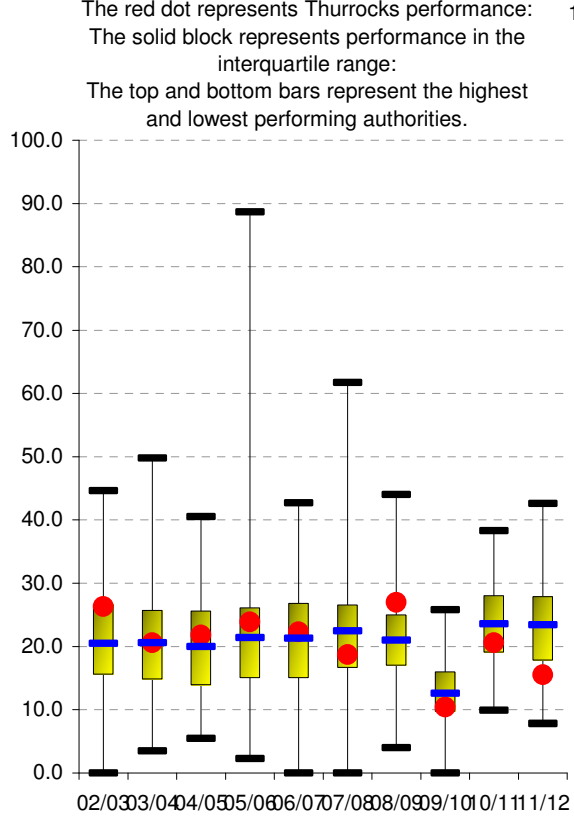
**Trend data - Regional groups**



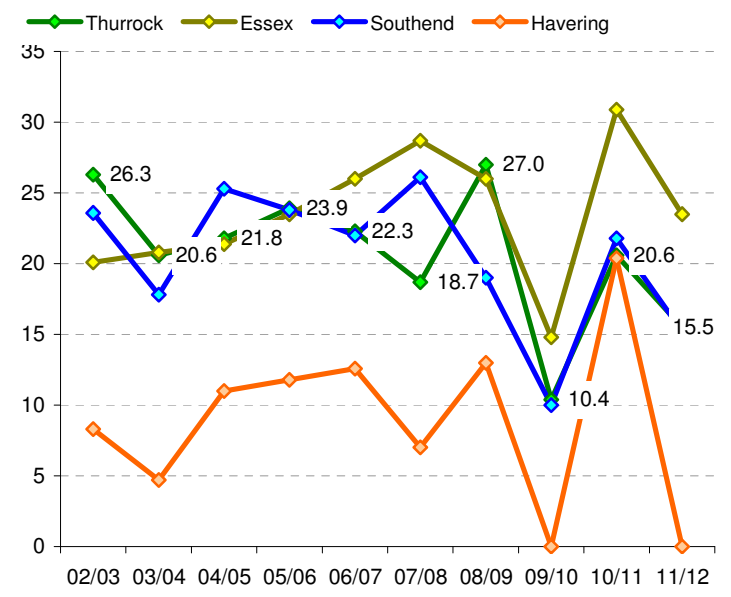
**Performance comparison**



**National Benchmarking**



**Trend data - Local neighbours**



# CP-5: The percentage of referrals of children in need that led to initial assessments

Ind Ref: NI 68

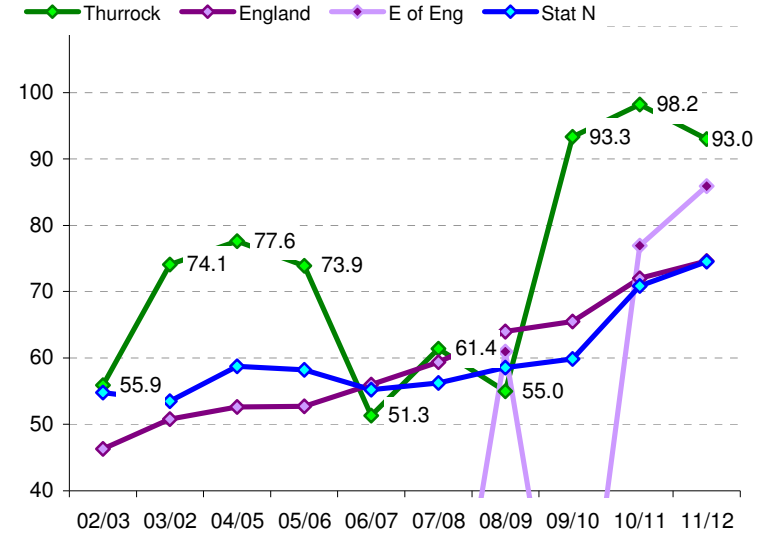
	07/08	08/09	09/10	10/11	11/12	dir	12/13
Thur Target		70.0	70.0	70.0	70.0		75.0
Thurrock	61.4	55.0	93.3	98.2	93.0	↓	
England	59.4	64.0	65.5	72.0	74.6	↑	
E of Eng		61.0		76.9	85.9	↑	
Stat N	56.2	58.5	59.9	70.9	74.5	↑	

Head of Service: Barbara Foster  
 Responsible officer: Rubina Mazher  
 Reporting period: Financial Yr  
 Latest data period: 11/12  
 Next data due: Oct-13  
 Good perf is: HIGH

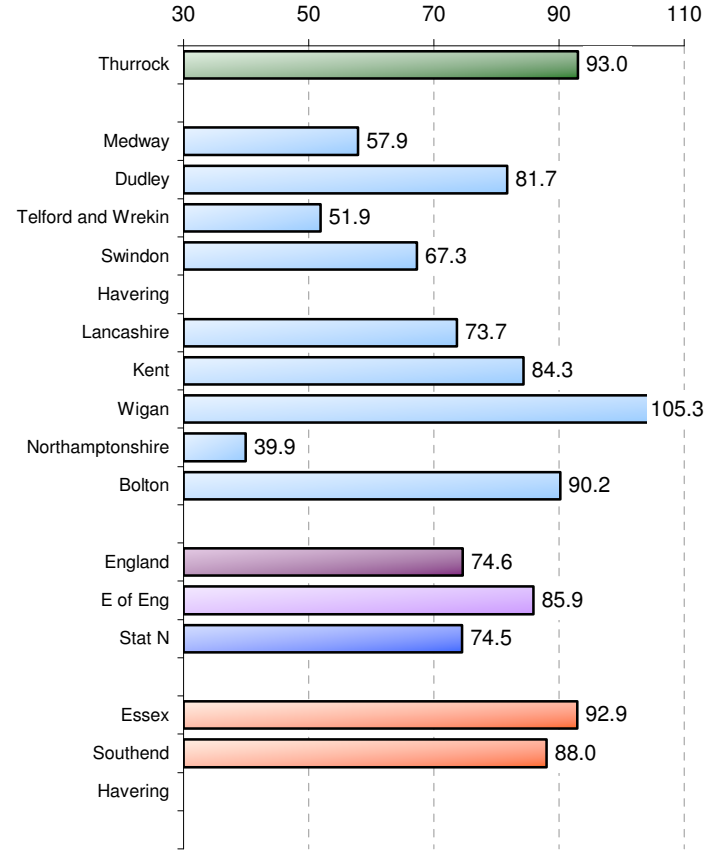
Rank (National) ( /144)	84	110	14	5	19	↓
Rank (SN) ( /11)	4	5	1	2	2	↔
Quartile	3	3	1	1	1	↔

Dif from National:	2.0	-9.0	27.8	26.2	18.4
Dif from target:		-15.0	23.3	28.2	23.0

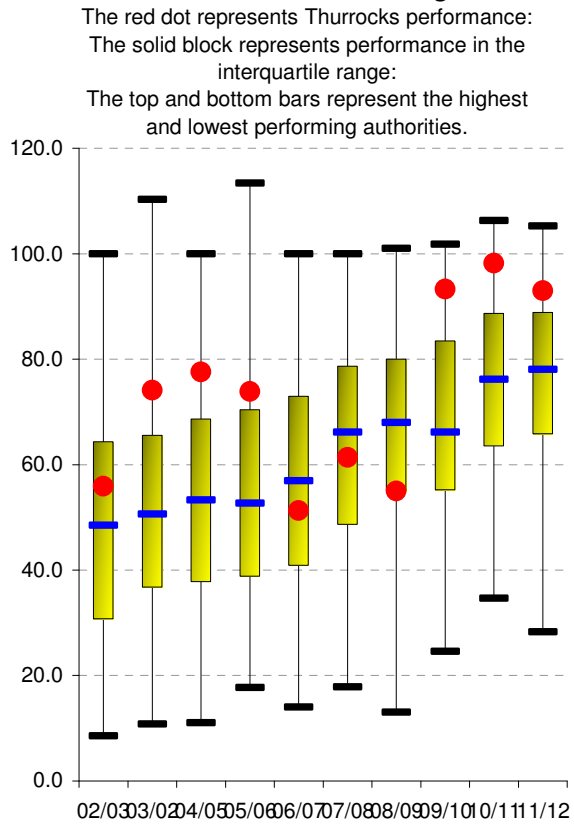
Trend data - Regional groups



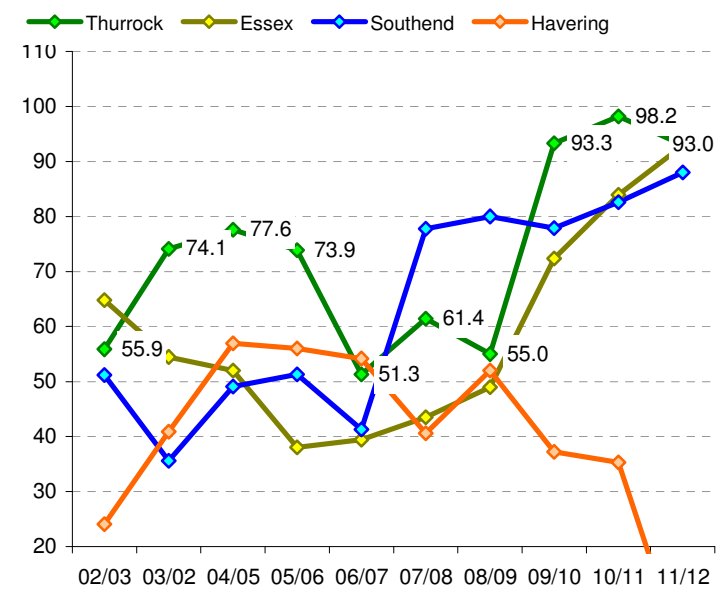
Performance comparison



National Benchmarking



Trend data - Local neighbours





# CP-15: Initial Assessments (Rate/10,000)

Ind Ref: CP-15

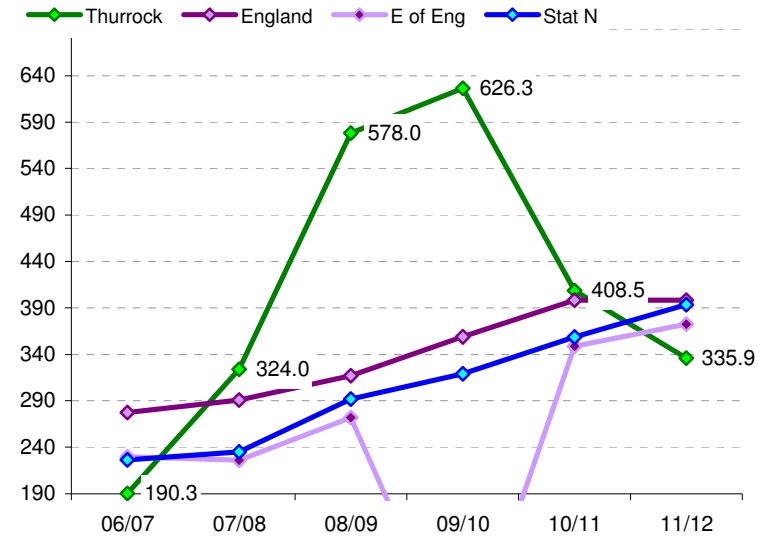
	07/08	08/09	09/10	10/11	11/12	dir	12/13
Thur Target							
Thurrock	324.0	578.0	626.3	408.5	335.9	↑	
England	291.0	317.0	359.0	398.2	398.1	↑	
E of Eng	226.0	272.0		348.9	372.4	↓	
Stat N	234.7	291.9	319.0	358.3	393.4	↓	

Head of Service: Barbara Foster  
 Responsible officer: Rubina Mazher  
 Reporting period: Financial Yr  
 Latest data period: 11/12  
 Next data due: Oct-13  
 Good perf is: LOW

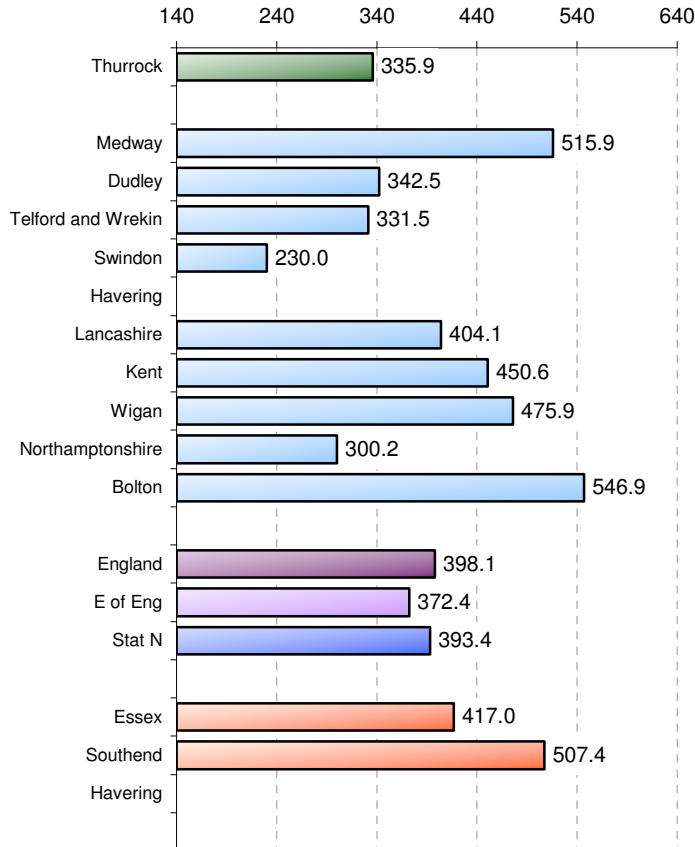
Rank (National) ( /144)	94	141	143	83	54	↑
Rank (SN) ( /11)	10	11	11	7	4	↑
Quartile	3	4	4	3	2	↑

Dif from National:	-33.0	-261.0	-267.3	-10.3	62.2
Dif from target:					

Trend data - Regional groups

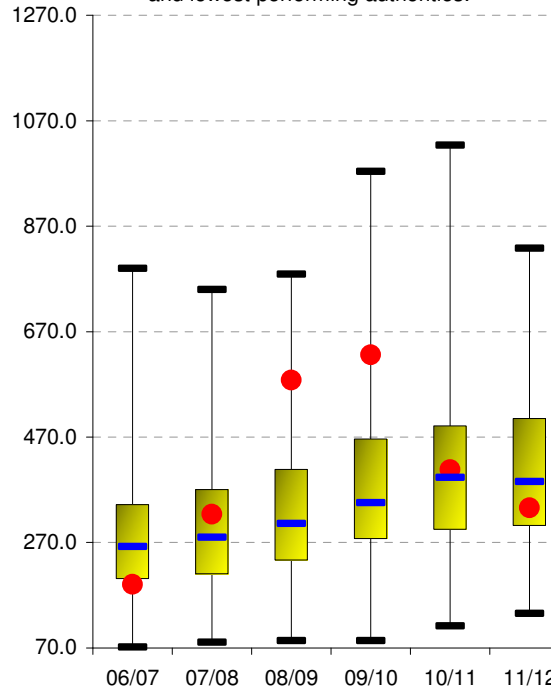


Performance comparison

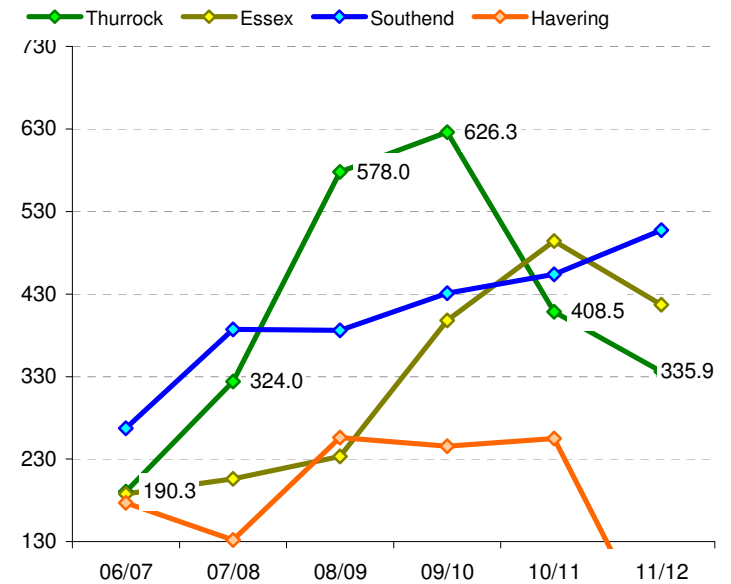


National Benchmarking

The red dot represents Thurrock's performance:  
 The solid block represents performance in the interquartile range:  
 The top and bottom bars represent the highest and lowest performing authorities.



Trend data - Local neighbours



### CP-19: Initial Assessments in 10 working days

Ind Ref:

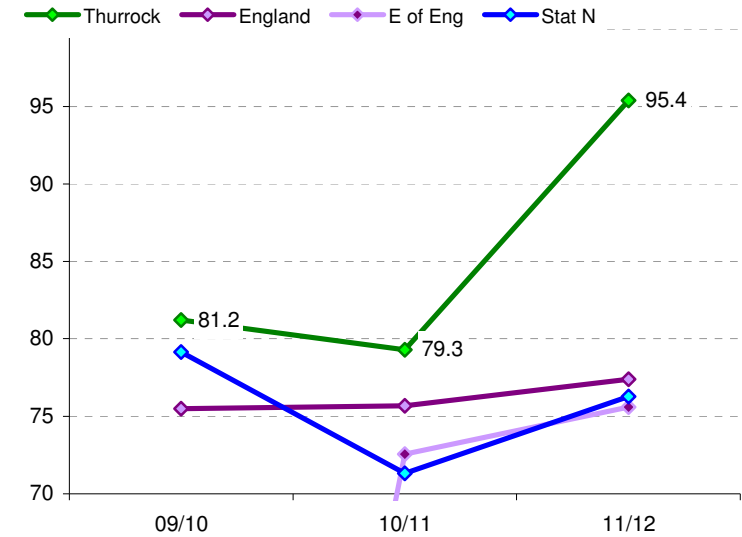
	09/10	10/11	11/12	dir	12/13
Thur Target					
Thurrock	81.2	79.3	95.4	↑	
England	75.5	75.7	77.4	↑	
E of Eng		72.5	75.6	↑	
Stat N	79.2	71.3	76.3	↑	

Head of Service: Barbara Foster  
 Responsible officer: Rubina Mazher  
 Reporting period: Financial Yr  
 Latest data period: 11/12  
 Next data due: Oct-13  
 Good perf is: HIGH

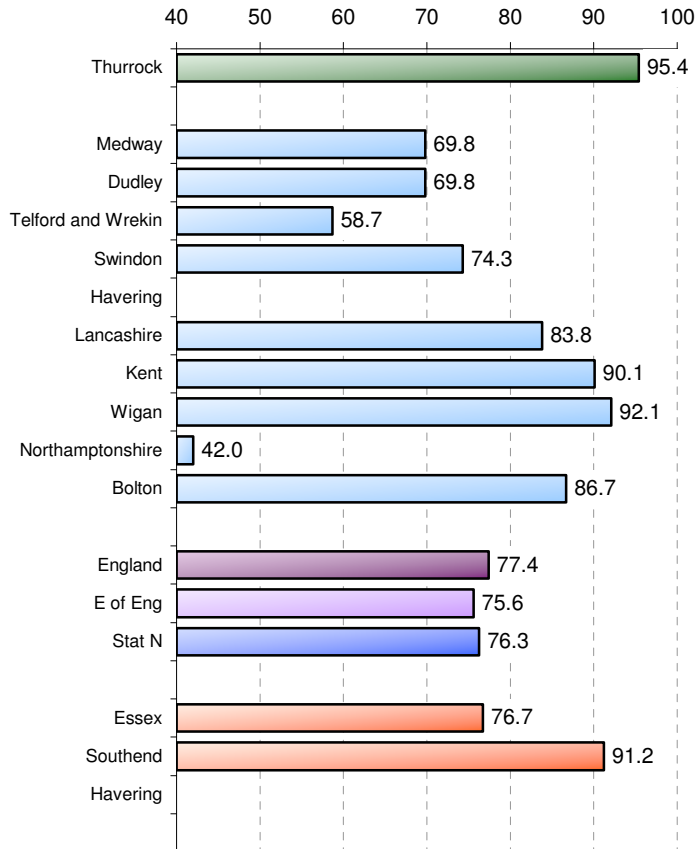
Rank (National) ( /141)	57	60	10	↑
Rank (SN) ( /11)	5	3	1	↑
Quartile	2	2	1	↑

Dif from National:	5.7	3.6	18.0
Dif from target:			

Trend data - Regional groups

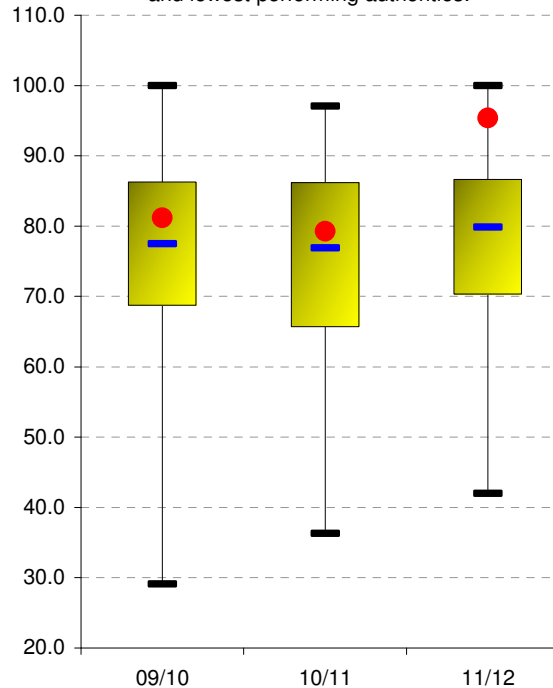


Performance comparison

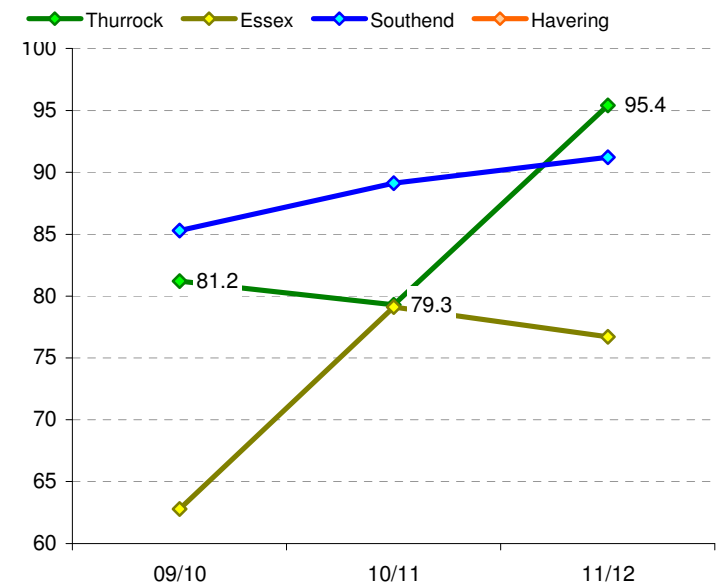


National Benchmarking

The red dot represents Thurrock's performance:  
 The solid block represents performance in the interquartile range:  
 The top and bottom bars represent the highest and lowest performing authorities.



Trend data - Local neighbours



# CP-11: Core Assessments (Rate/10,000)

Ind Ref: CP-11

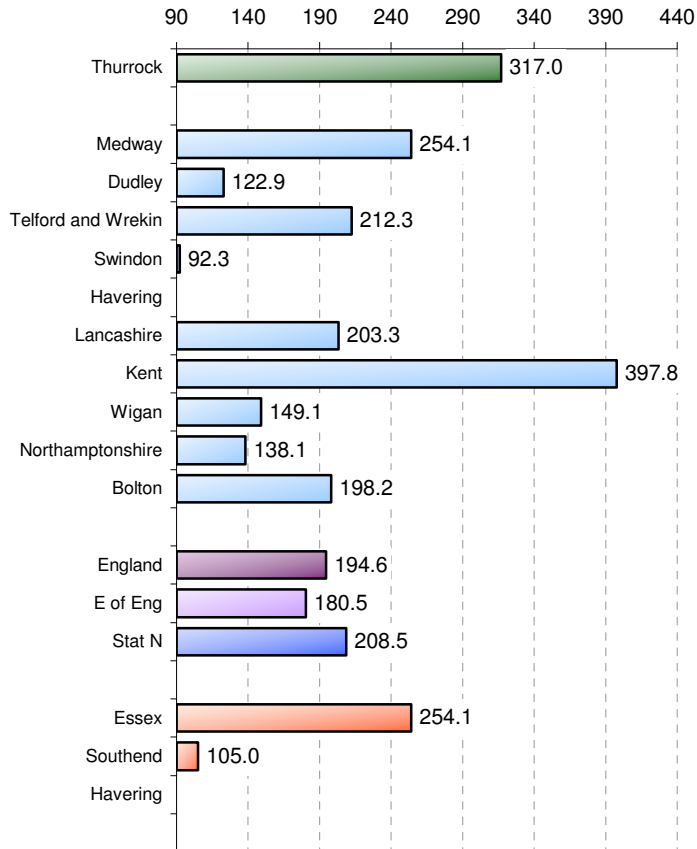
	07/08	08/09	09/10	10/11	11/12	dir	12/13
Thur Target							
Thurrock	92.5	169.0	212.3	238.2	317.0	↓	
England	95.6	110.0	125.0	167.3	194.6	↓	
E of Eng		81.0		155.3	180.5	↓	
Stat N	91.0	109.9	126.9	167.9	208.5	↓	

Head of Service: Barbara Foster  
 Responsible officer: Rubina Mazher  
 Reporting period: Financial Yr  
 Latest data period: 11/12  
 Next data due: Oct-13  
 Good perf is: LOW

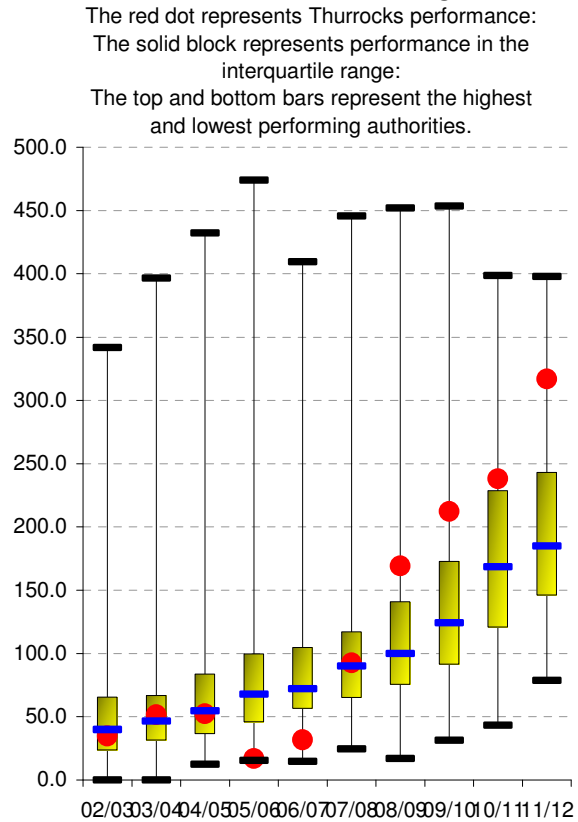
Rank (National) ( /143)	82	127	132	118	135	↓
Rank (SN) ( /11)	6	10	11	10	9	↑
Quartile	3	4	4	4	4	↔

Dif from National:	3.1	-59.0	-87.3	-70.9	-122.4
Dif from target:					

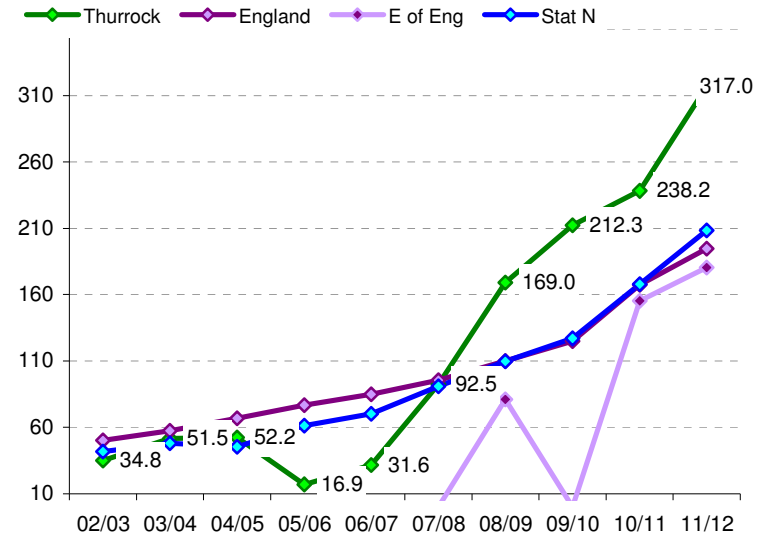
## Performance comparison



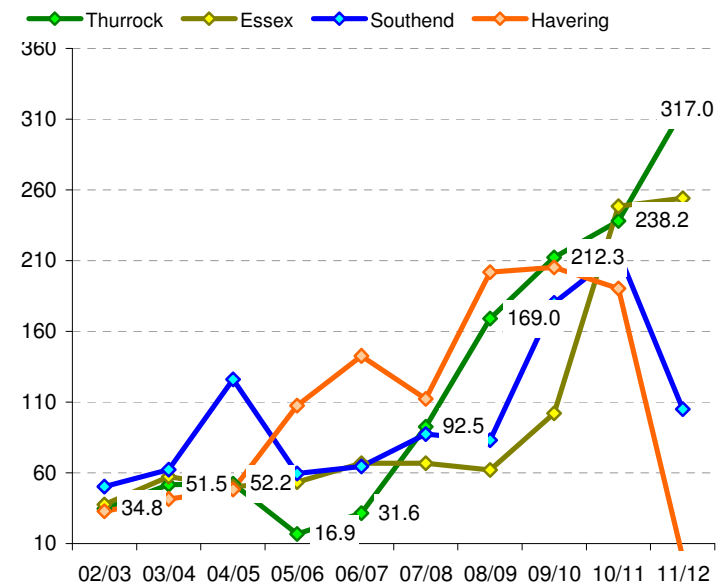
## National Benchmarking



## Trend data - Regional groups



## Trend data - Local neighbours



**CP-2: Core Assessments in 35 days**  
**Ind Ref: NI 60**

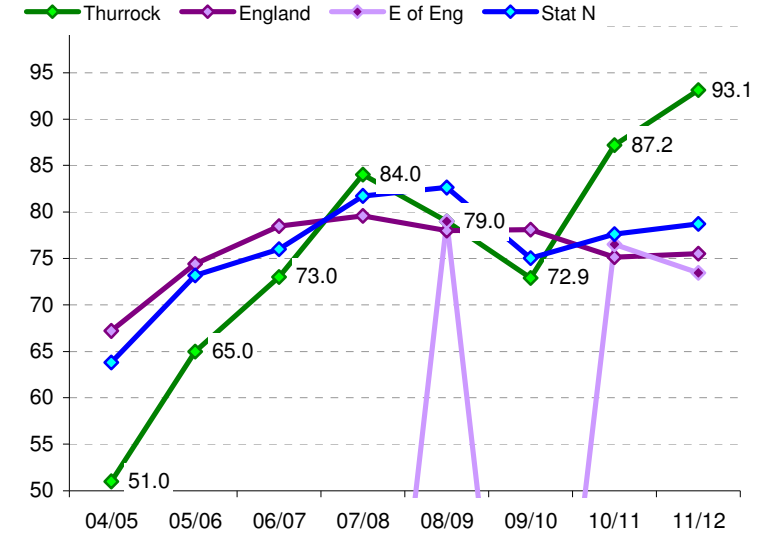
	07/08	08/09	09/10	10/11	11/12	dir	12/13
Thur Target		85.0	88.0	88.0	90.0		90.0
Thurrock	84.0	79.0	72.9	87.2	93.1	↑	
England	79.6	78.0	78.1	75.1	75.5	↑	
E of Eng		79.0		76.5	73.4	↓	
Stat N	81.7	82.6	75.0	77.6	78.7	↑	

Head of Service: Barbara Foster  
 Responsible officer: Rubina Mazher  
 Reporting period: Financial Yr  
 Latest data period: 11/12  
 Next data due: Oct-13  
 Good perf is: HIGH

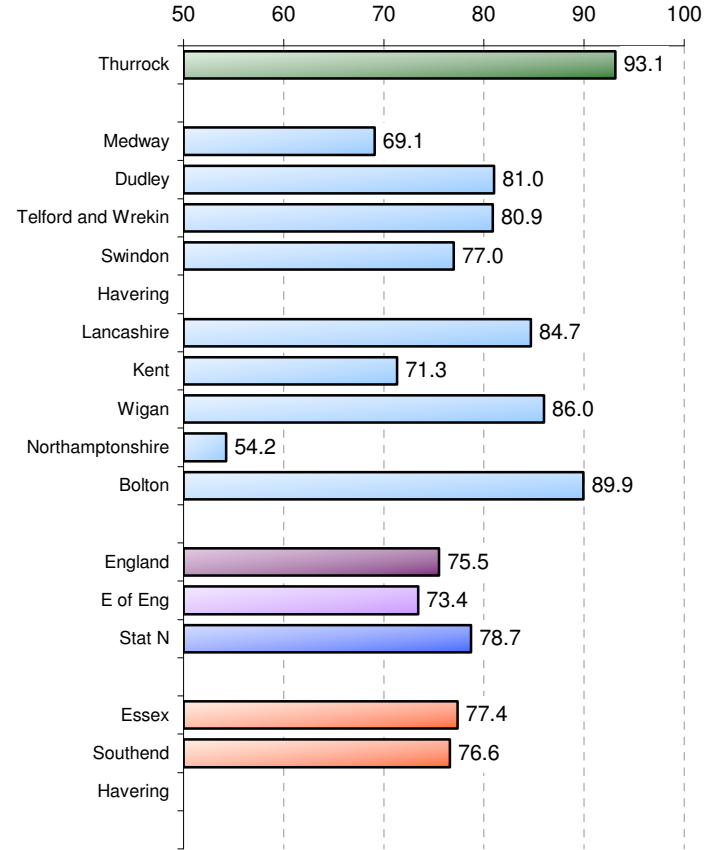
Rank (National) ( /143)	48	82	88	27	8	↑
Rank (SN) ( /11)	5	8	7	3	1	↑
Quartile	2	3	3	1	1	↔

Dif from National:	4.4	1.0	-5.2	12.1	17.6
Dif from target:		-6.0	-15.1	-0.8	3.1

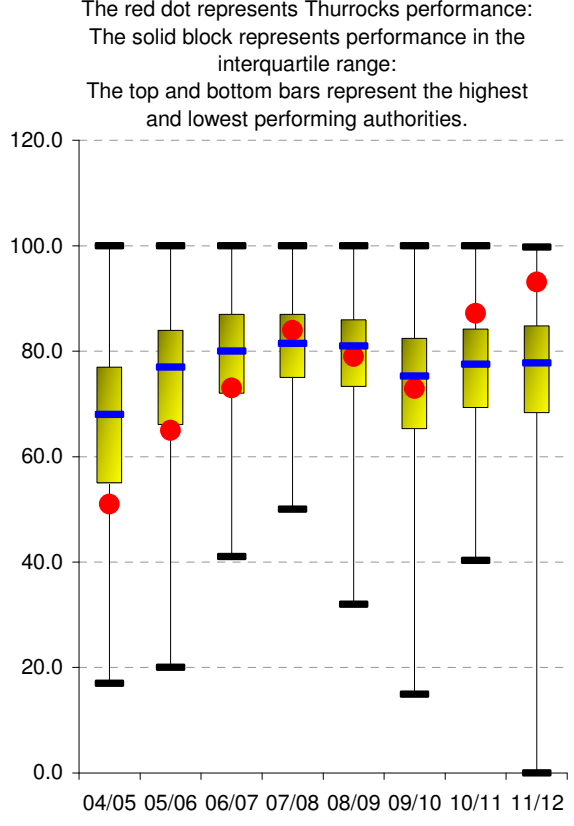
**Trend data - Regional groups**



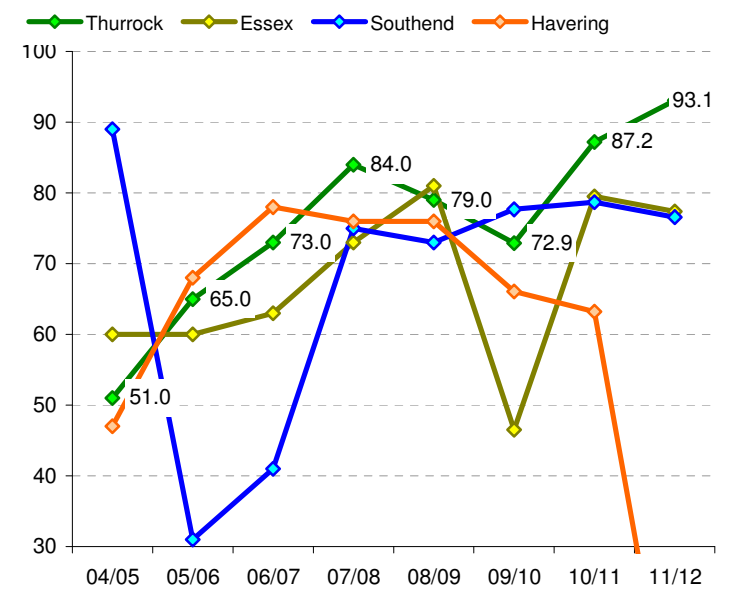
**Performance comparison**



**National Benchmarking**



**Trend data - Local neighbours**



# CP-16: Section 47 started (Rate/10,000)

Ind Ref: CP-16

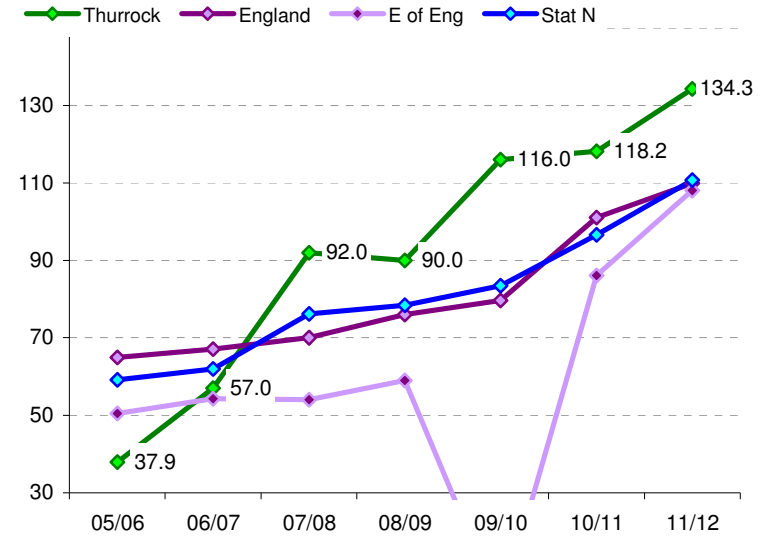
	07/08	08/09	09/10	10/11	11/12	dir	12/13
Thur Target							
Thurrock	92.0	90.0	116.0	118.2	134.3	↓	
England	70.0	76.0	79.6	101.1	109.9	↓	
E of Eng	54.0	59.0		86.1	108.1	↓	
Stat N	76.2	78.4	83.5	96.6	110.7	↓	

Head of Service: Barbara Foster  
 Responsible officer: Rubina Mazher  
 Reporting period: Financial Yr  
 Latest data period: 11/12  
 Next data due: Oct-13  
 Good perf is: LOW

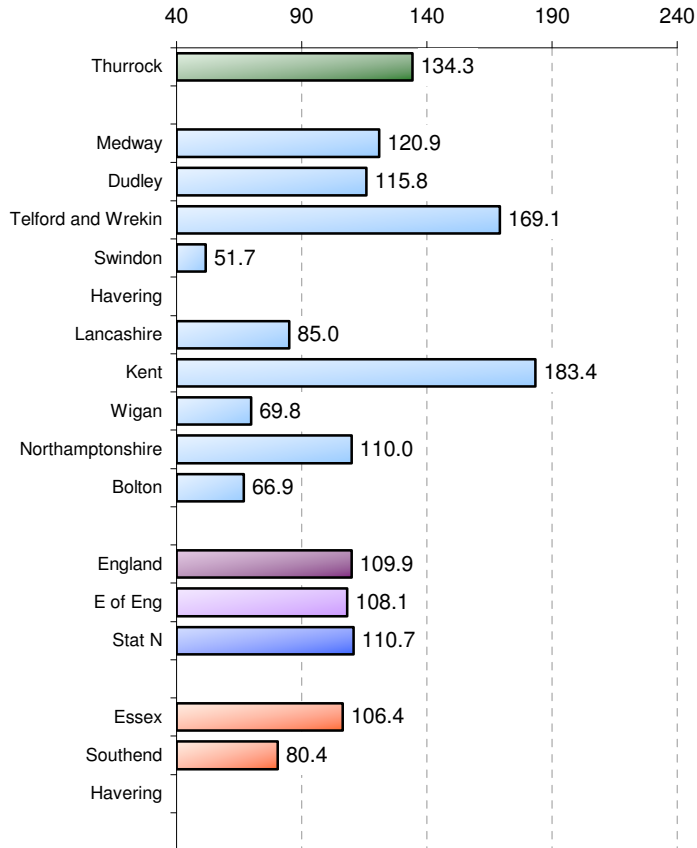
Rank (National) ( /145)	119	105	106	106	106	↔
Rank (SN) ( /11)	9	8	7	9	8	↑
Quartile	4	3	4	3	3	↔

Dif from National:	-22.0	-14.0	-36.4	-17.1	-24.4	
Dif from target:						

Trend data - Regional groups

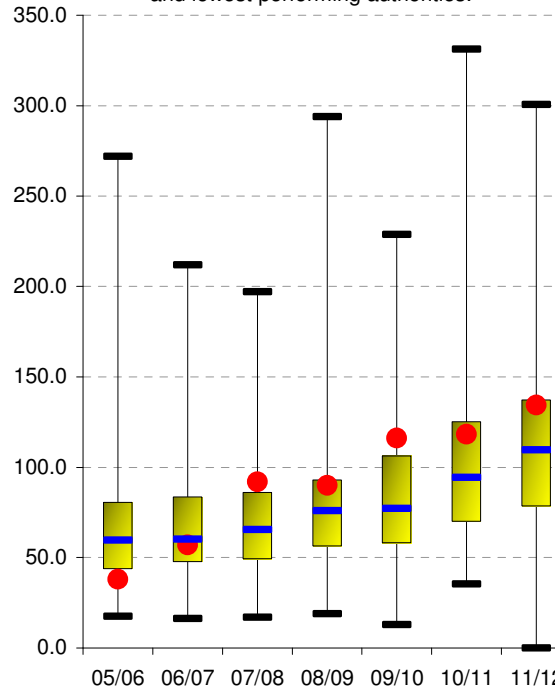


Performance comparison

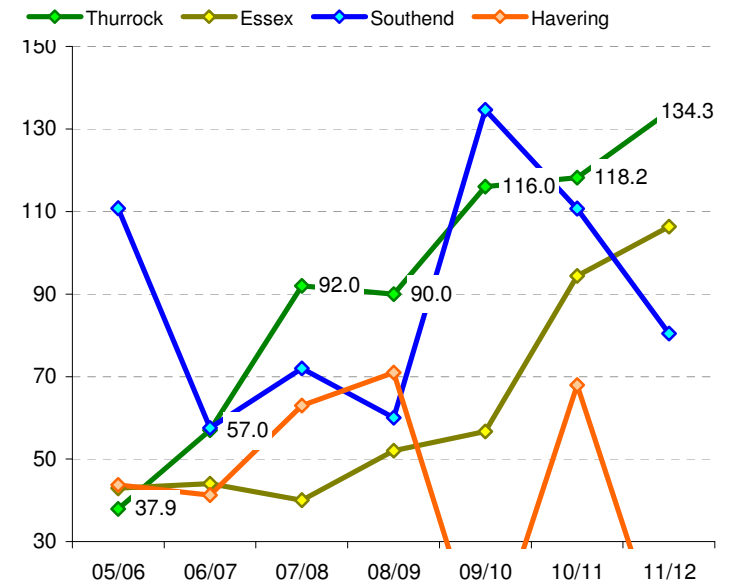


National Benchmarking

The red dot represents Thurrock's performance:  
 The solid block represents performance in the interquartile range:  
 The top and bottom bars represent the highest and lowest performing authorities.



Trend data - Local neighbours



# CP-10: Initial Child protection Conferences (Rate per 10,000)

Ind Ref: CP-10

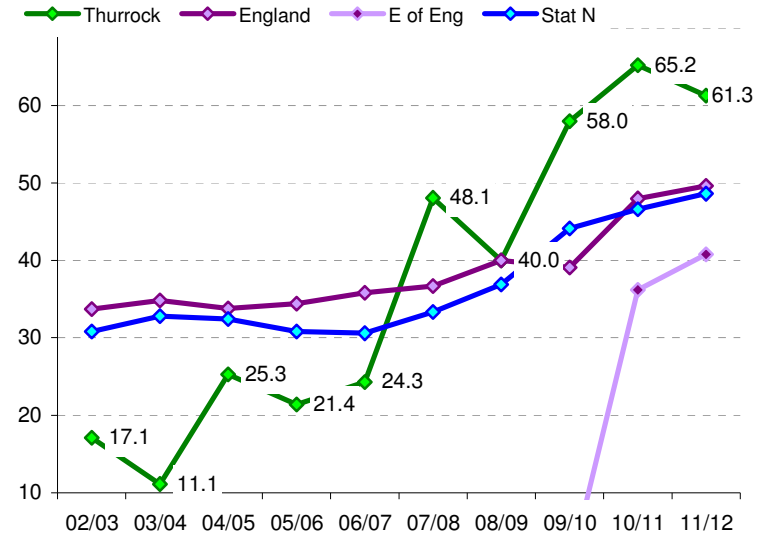
	07/08	08/09	09/10	10/11	11/12	dir	12/13
Thur Target			26.0	26.0	26.0		26.0
Thurrock	48.1	40.0	58.0	65.2	61.3	↑	
England	36.7	40.0	39.1	48.0	49.6	↓	
E of Eng				36.2	40.8	↓	
Stat N	33.3	36.9	44.2	46.6	48.6	↓	

Head of Service: Barbara Foster  
 Responsible officer: Neale Laurie  
 Reporting period: Financial Yr  
 Latest data period: 11/12  
 Next data due: Oct-13  
 Good perf is: LOW

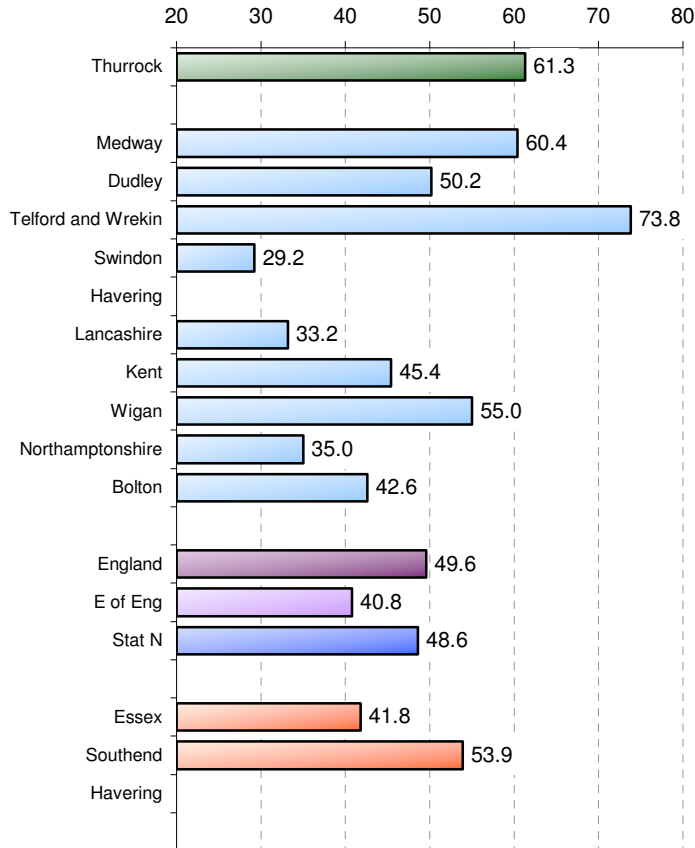
Rank (National) ( /146)	110	69	107	116	102	↑
Rank (SN) ( /11)	11	6	8	9	9	↔
Quartile	3	2	4	4	3	↑

Dif from National:	-11.4	0.0	-18.9	-17.3	-11.7
Dif from target:			-32.0	-39.2	-35.3

## Trend data - Regional groups

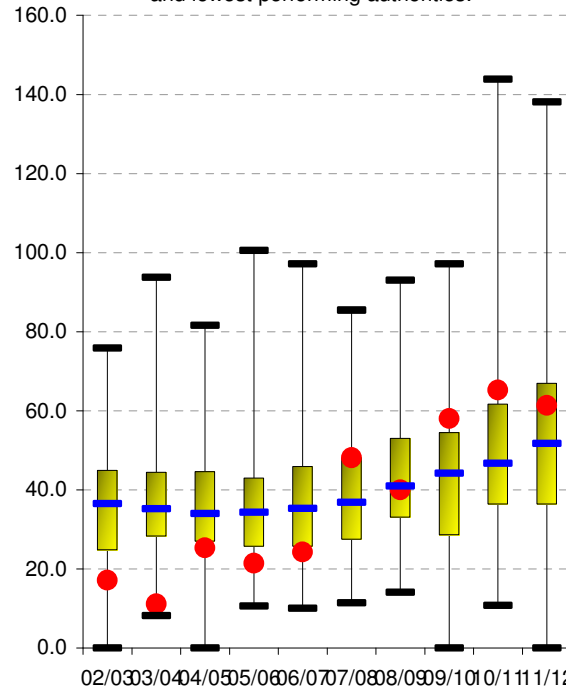


## Performance comparison

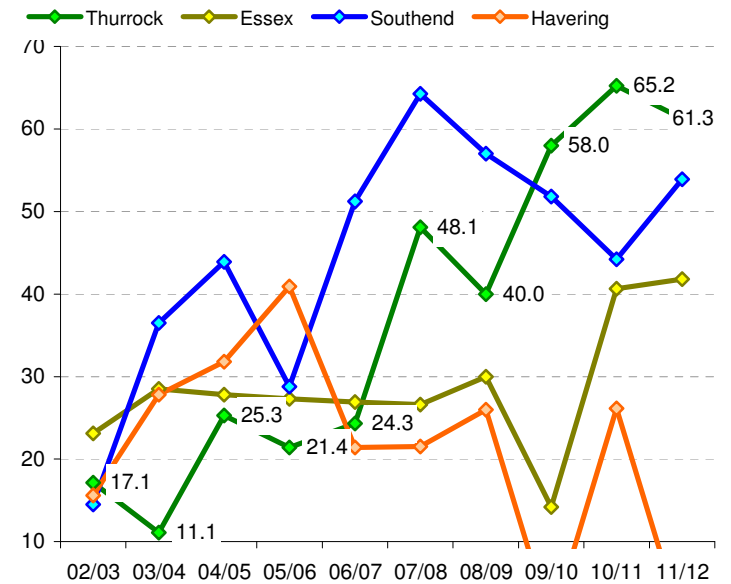


## National Benchmarking

The red dot represents Thurrock's performance:  
 The solid block represents performance in the interquartile range:  
 The top and bottom bars represent the highest and lowest performing authorities.



## Trend data - Local neighbours



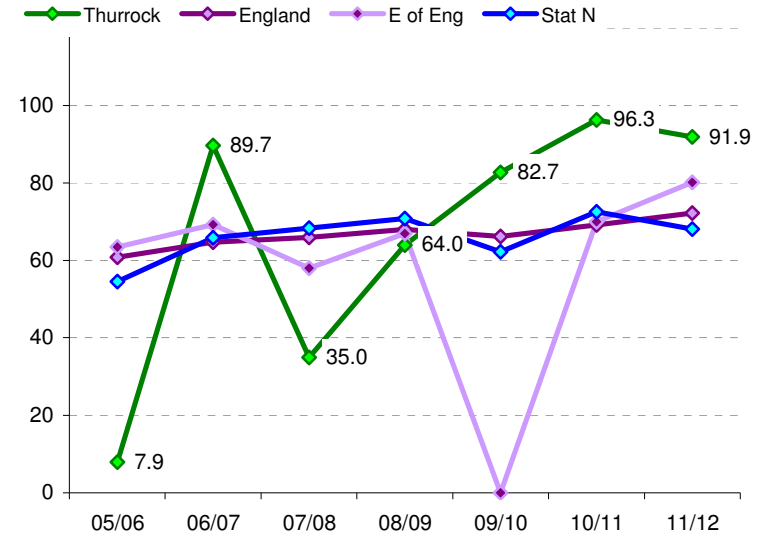
# CP-18: ICPC within 15 days

Ind Ref: CP-18

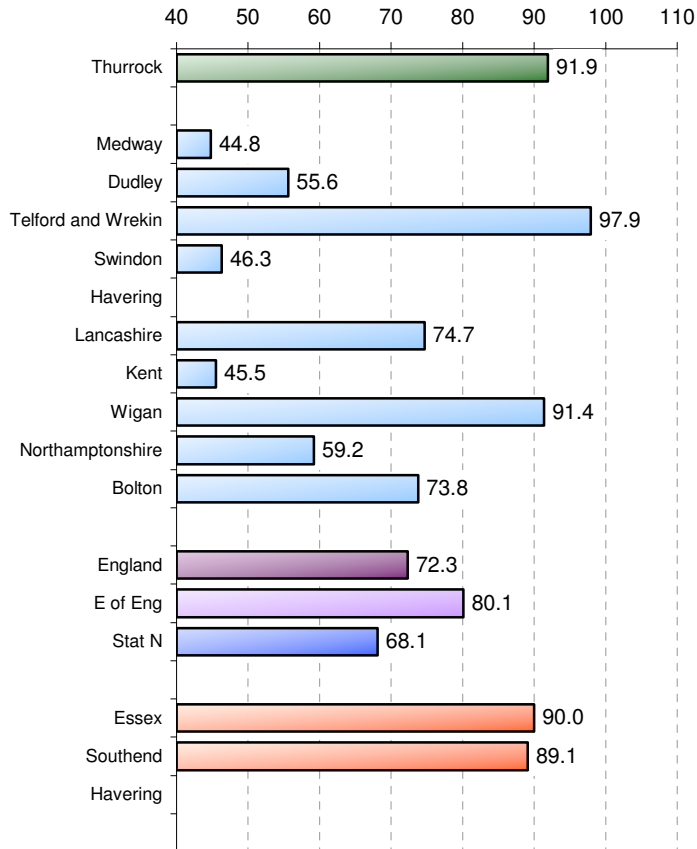
	07/08	08/09	09/10	10/11	11/12	dir	12/13
Thur Target							
Thurrock	35.0	64.0	82.7	96.3	91.9	↓	
England	66.0	68.0	66.2	69.2	72.3	↑	
E of Eng	58.0	67.0		70.0	80.1	↑	
Stat N	68.4	70.8	62.2	72.6	68.1	↓	
Rank (National) ( /140)	139	97	46	11	26	↓	
Rank (SN) ( /11)	11	7	3	1	2	↓	
Quartile	4	3	2	1	1	↔	
Dif from National:	-31.0	-4.0	16.5	27.1	19.6		
Dif from target:							

Head of Service: Barbara Foster  
 Responsible officer: Neale Laurie  
 Reporting period: Financial Yr  
 Latest data period: 11/12  
 Next data due: Oct-13  
 Good perf is: HIGH

## Trend data - Regional groups

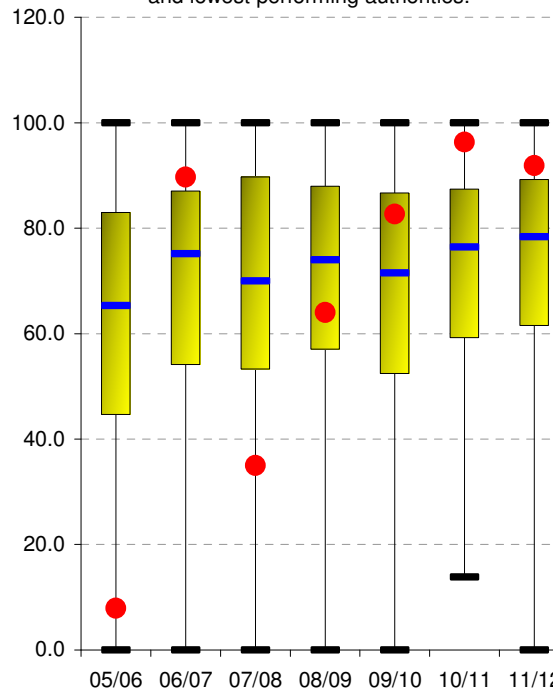


## Performance comparison

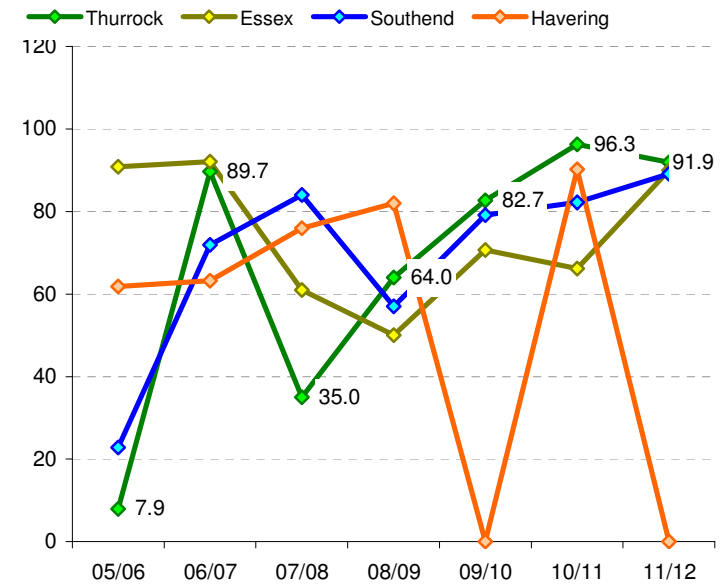


## National Benchmarking

The red dot represents Thurrock's performance:  
 The solid block represents performance in the interquartile range:  
 The top and bottom bars represent the highest and lowest performing authorities.



## Trend data - Local neighbours



# CP-12: Subject to Child protection plan (Rate/10,000)

Ind Ref: CP-12

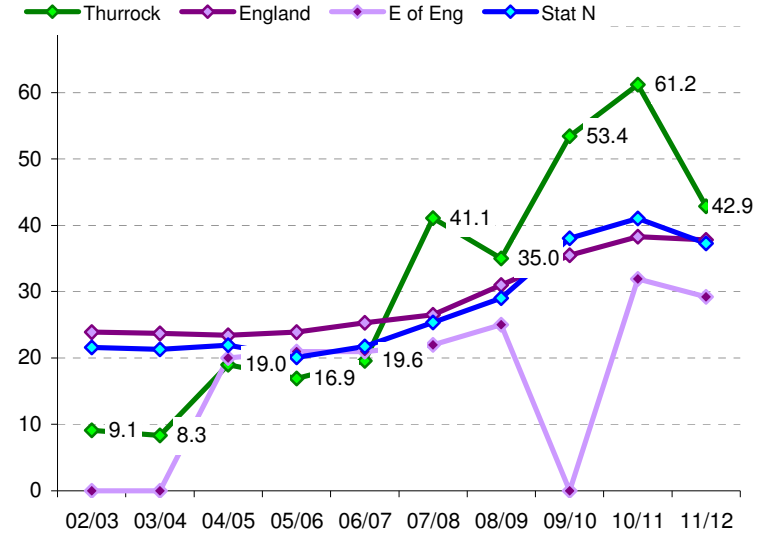
	07/08	08/09	09/10	10/11	11/12	dir	12/13
Thur Target							
Thurrock	41.1	35.0	53.4	61.2	42.9	↑	
England	26.5	31.0	35.5	38.3	37.8	↑	
E of Eng	22.0	25.0		31.9	29.2	↑	
Stat N	25.3	29.0	38.0	41.0	37.3	↑	

Head of Service: Barbara Foster  
 Responsible officer: Neale Laurie  
 Reporting period: Financial Yr  
 Latest data period: 11/12  
 Next data due: Oct-13  
 Good perf is: LOW

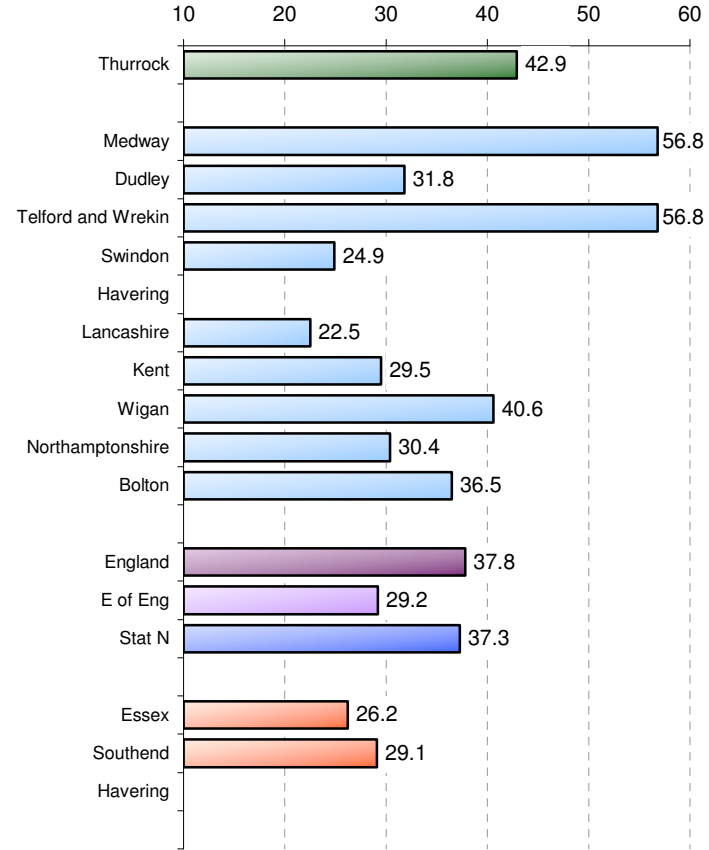
Rank (National) ( /150)	125	93	117	130	91	↑
Rank (SN) ( /11)	10	9	7	10	8	↑
Quartile	4	3	4	4	3	↑

Dif from National:	-14.6	-4.0	-17.9	-22.9	-5.1
Dif from target:					

Trend data - Regional groups

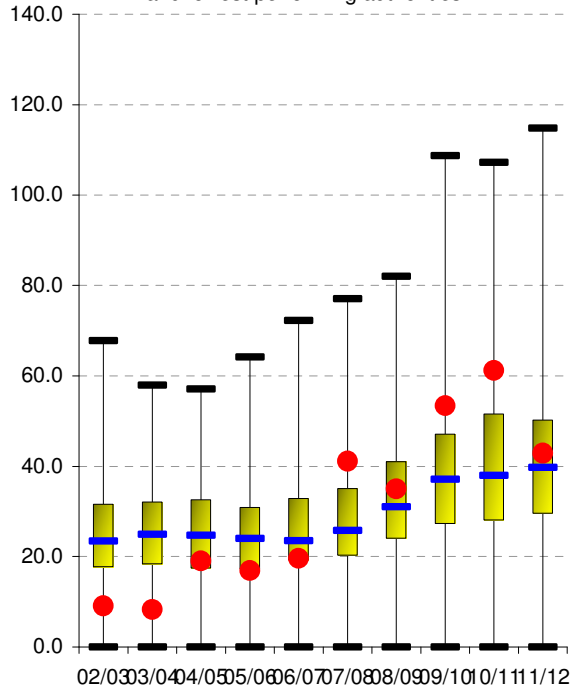


Performance comparison

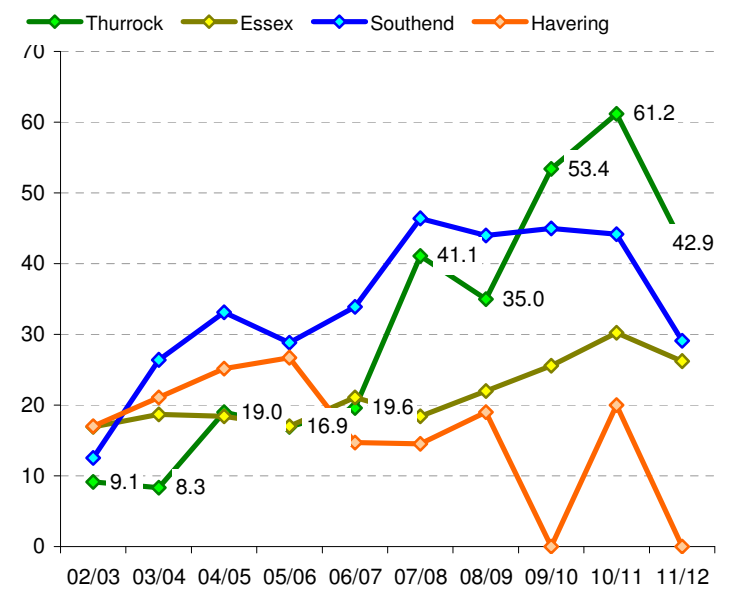


National Benchmarking

The red dot represents Thurrock's performance:  
 The solid block represents performance in the interquartile range:  
 The top and bottom bars represent the highest and lowest performing authorities.



Trend data - Local neighbours





**CP-6: CPR reviewed on time**  
**Ind Ref: NI 67**

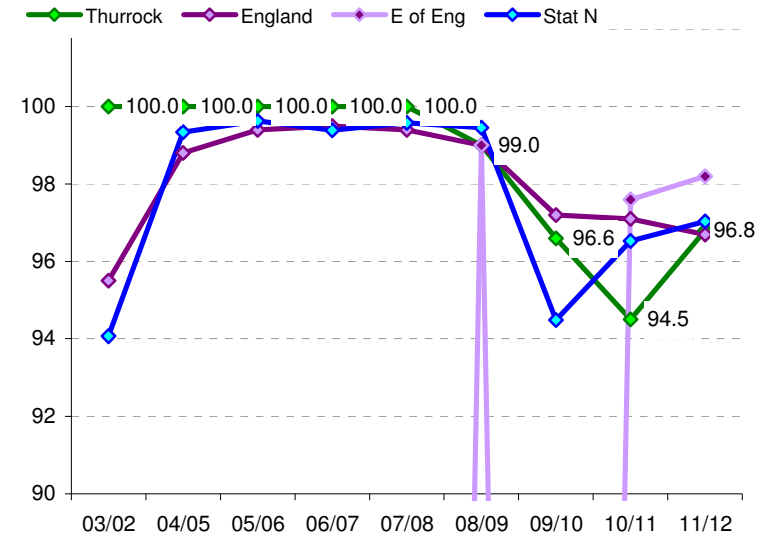
	07/08	08/09	09/10	10/11	11/12	dir	12/13
Thur Target			100.0	100.0	100.0		100.0
Thurrock	100.0	99.0	96.6	94.5	96.8	↑	
England	99.4	99.0	97.2	97.1	96.7	↓	
E of Eng		99.0		97.6	98.2	↑	
Stat N	99.6	99.5	94.5	96.5	97.0	↑	

Head of Service: Barbara Foster  
 Responsible officer: Neale Laurie  
 Reporting period: Financial Yr  
 Latest data period: 11/12  
 Next data due: Oct-13  
 Good perf is: HIGH

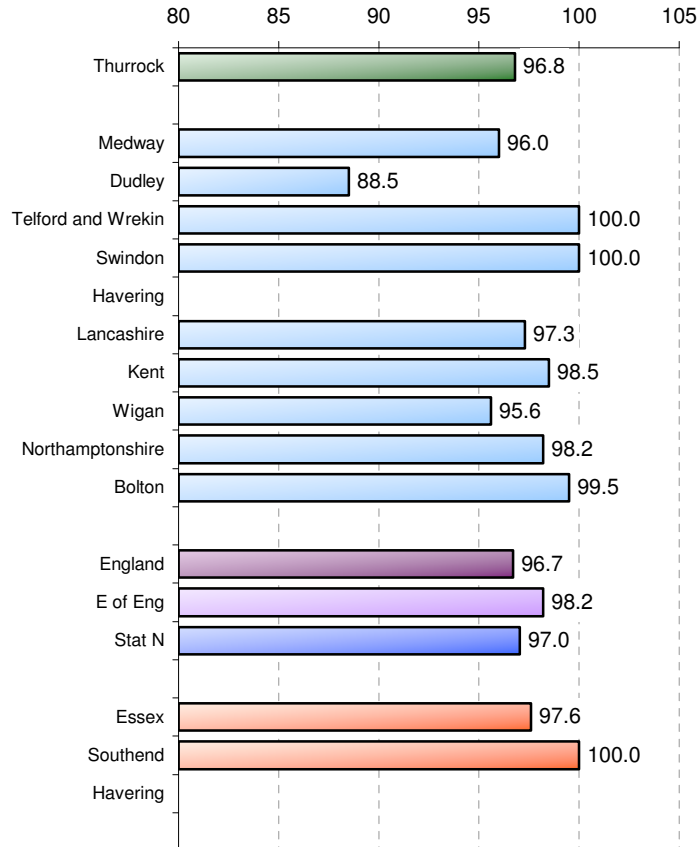
Rank (National) ( /150)	1	108	71	127	110	↑
Rank (SN) ( /11)	1	8	8	8	7	↑
Quartile	1	3	3	4	3	↑

Dif from National:	0.6	0.0	-0.6	-2.6	0.1
Dif from target:			-3.4	-5.5	-3.2

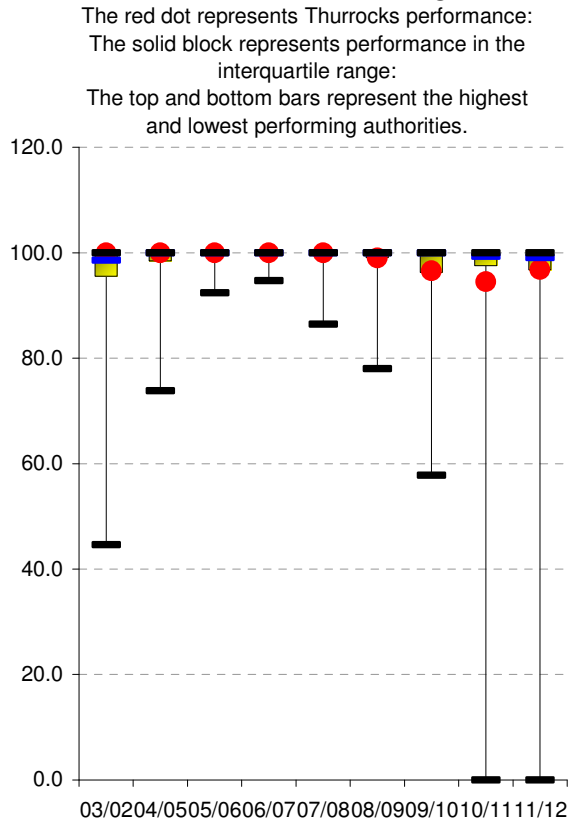
**Trend data - Regional groups**



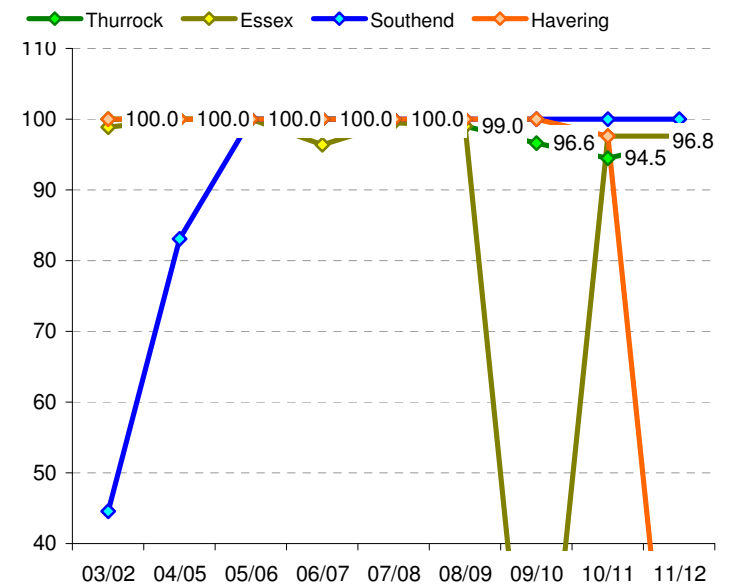
**Performance comparison**



**National Benchmarking**



**Trend data - Local neighbours**



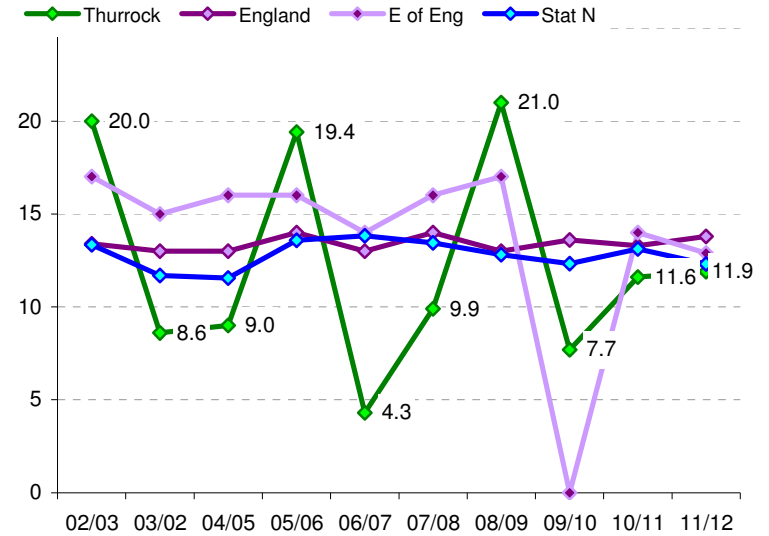
# CP-4: CPR re registration

Ind Ref: NI 65

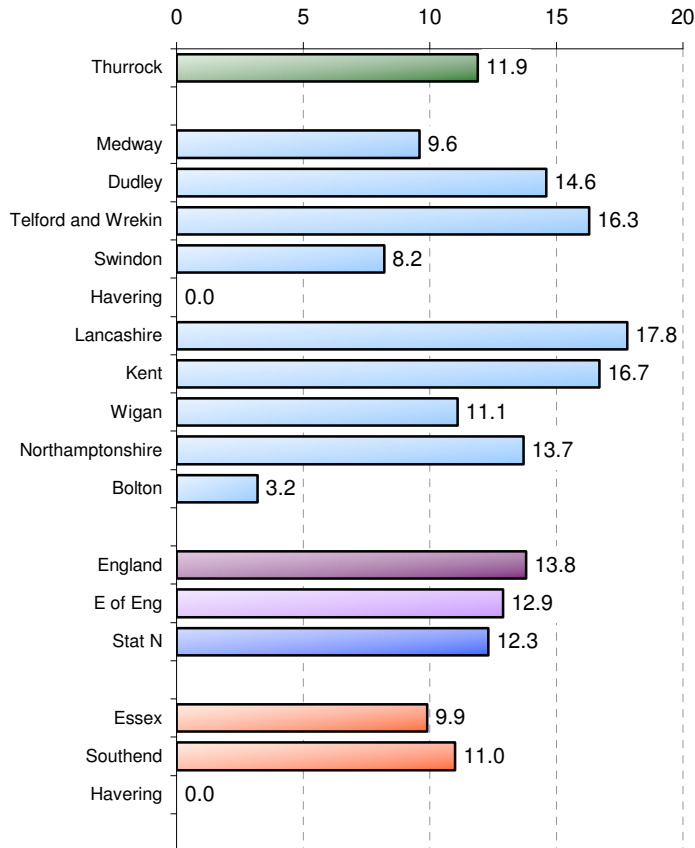
	07/08	08/09	09/10	10/11	11/12	dir	12/13
Thur Target				13.0	12.0		11.0
Thurrock	9.9	21.0	7.7	11.6	11.9	↓	
England	14.0	13.0	13.6	13.3	13.8	↓	
E of Eng	16.0	17.0		14.0	12.9	↑	
Stat N	13.4	12.8	12.3	13.1	12.3	↑	
Rank (National) ( /145)	33	139	11	63	60	↑	
Rank (SN) ( /11)	1	11	2	2	5	↓	
Quartile	1	4	1	2	2	↔	
Dif from National:	4.1	-8.0	5.9	1.7	1.9		
Dif from target:				1.4	0.1		

Head of Service: Barbara Foster  
 Responsible officer: Neale Laurie  
 Reporting period: Financial Yr  
 Latest data period: 11/12  
 Next data due: Oct-13  
 Good perf is: LOW

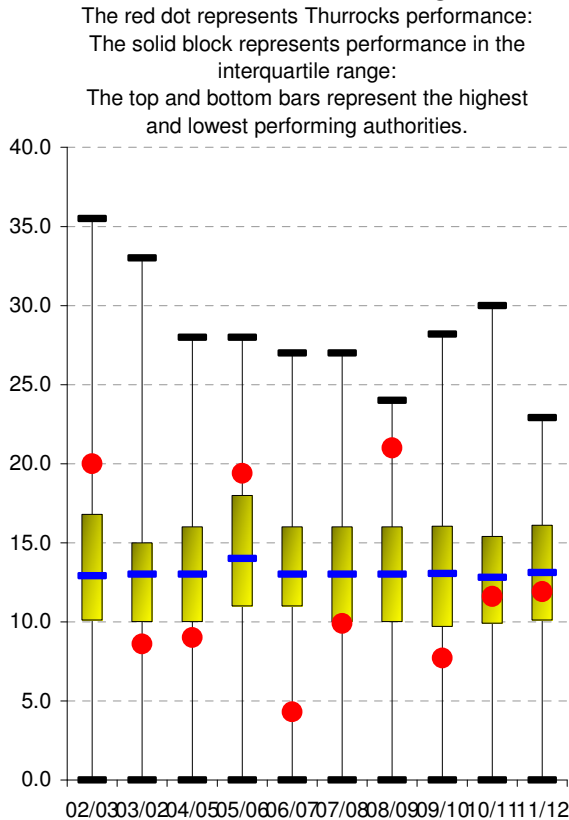
## Trend data - Regional groups



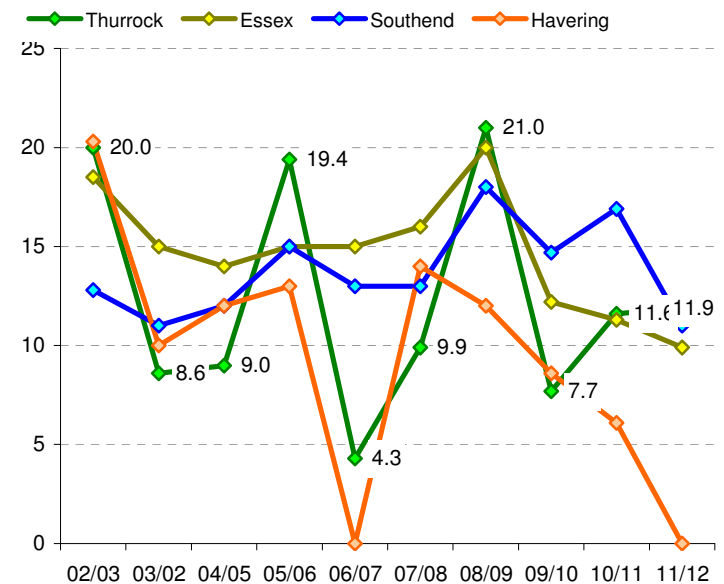
## Performance comparison



## National Benchmarking



## Trend data - Local neighbours



### CP-13: Became Subject to CPP (Rate/10,000)

Ind Ref: CP-13

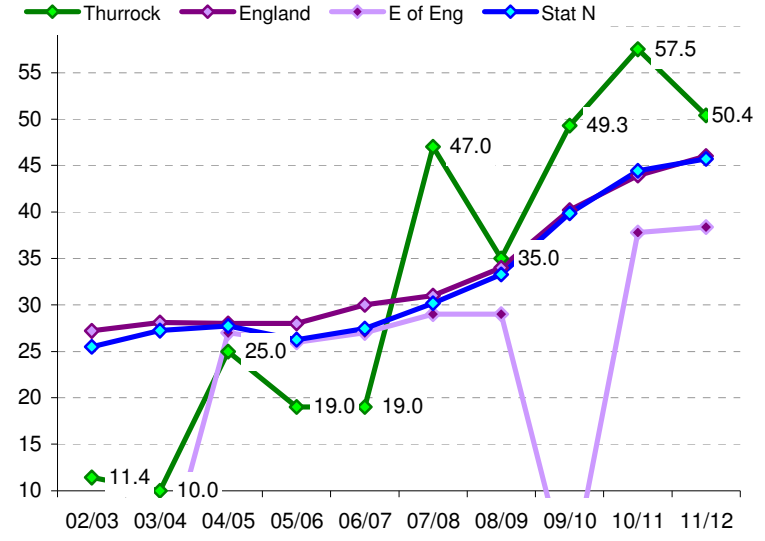
	07/08	08/09	09/10	10/11	11/12	dir	12/13
Thur Target							
Thurrock	47.0	35.0	49.3	57.5	50.4	↑	
England	31.0	34.0	40.2	43.9	46.0	↓	
E of Eng	29.0	29.0		37.8	38.4	↓	
Stat N	30.2	33.3	39.9	44.4	45.7	↓	

Head of Service: Barbara Foster  
 Responsible officer: Neale Laurie  
 Reporting period: Financial Yr  
 Latest data period: 11/12  
 Next data due: Oct-13  
 Good perf is: LOW

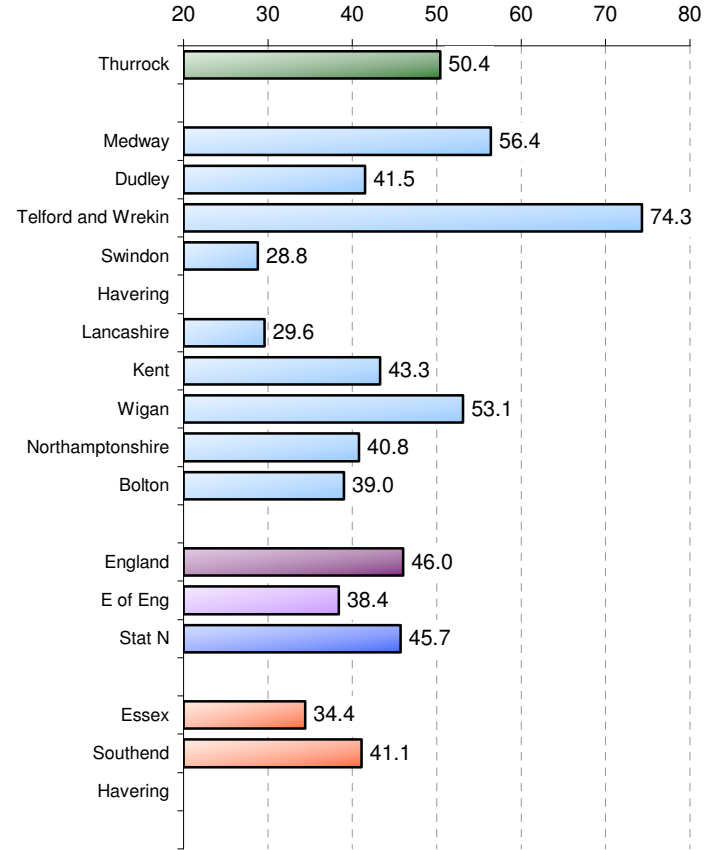
Rank (National) ( /150)	122	70	106	106	90	↑
Rank (SN) ( /11)	11	7	9	9	7	↑
Quartile	4	2	3	3	3	↔

Dif from National:	-16.0	-1.0	-9.1	-13.6	-4.4
Dif from target:					

Trend data - Regional groups

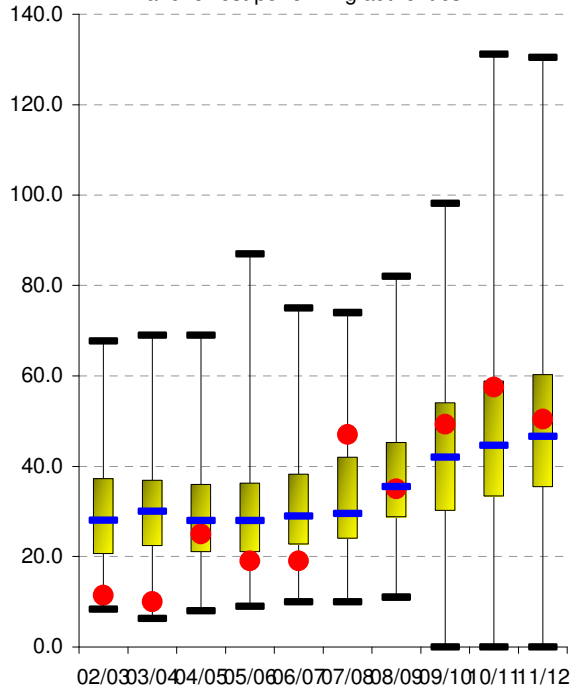


Performance comparison

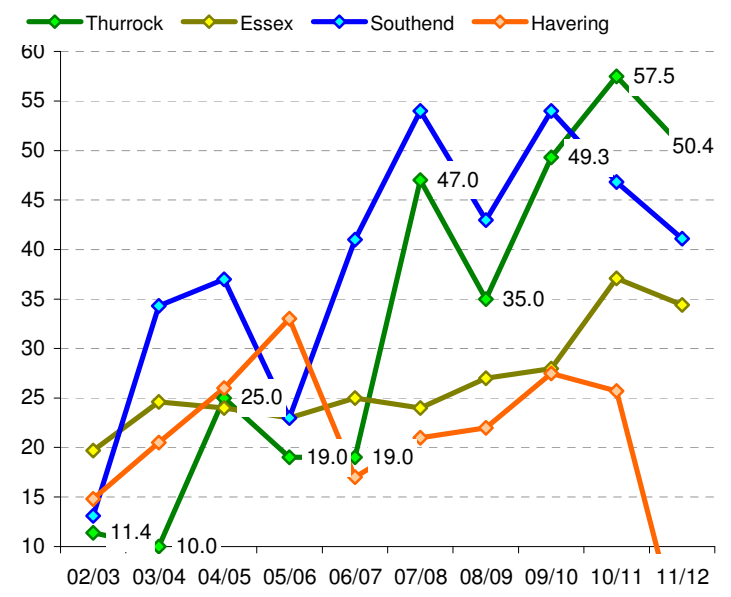


National Benchmarking

The red dot represents Thurrock's performance:  
 The solid block represents performance in the interquartile range:  
 The top and bottom bars represent the highest and lowest performing authorities.



Trend data - Local neighbours



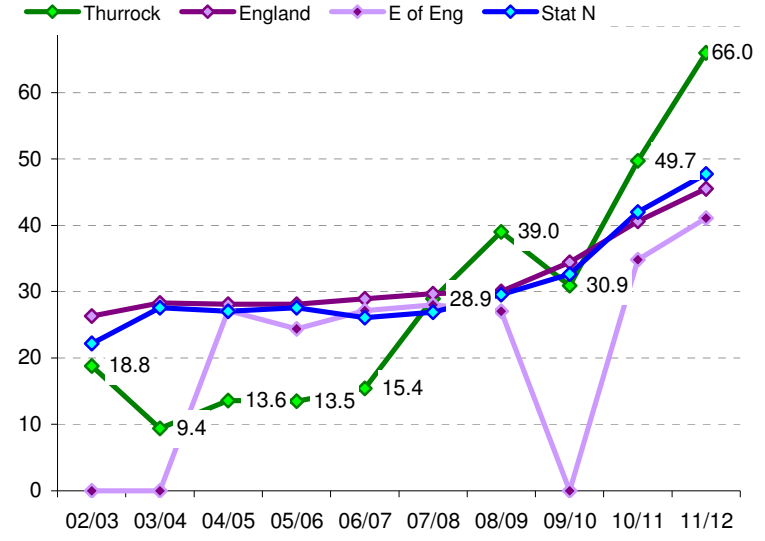
# CP-14: Ceased to be Subject to CPP (Rate/10,000)

Ind Ref: CP-14

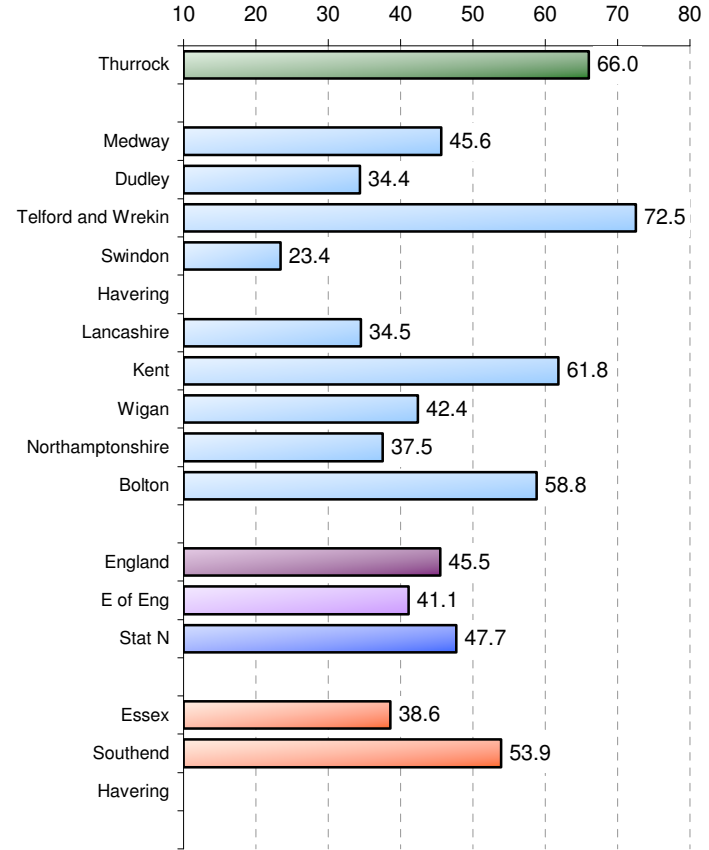
	07/08	08/09	09/10	10/11	11/12	dir	12/13
Thur Target							
Thurrock	28.9	39.0	30.9	49.7	66.0	↓	
England	29.7	30.0	34.4	40.6	45.5	↓	
E of Eng	28.0	27.0		34.8	41.1	↓	
Stat N	26.9	29.5	32.6	42.0	47.7	↓	
Rank (National) ( /149)	73	115	62	83	127	↓	
Rank (SN) ( /11)	7	10	5	8	9	↓	
Quartile	2	4	2	3	4	↓	
Dif from National:	0.8	-9.0	3.5	-9.1	-20.5		
Dif from target:							

Head of Service: Barbara Foster  
 Responsible officer: Neale Laurie  
 Reporting period: Financial Yr  
 Latest data period: 11/12  
 Next data due: Oct-13  
 Good perf is: LOW

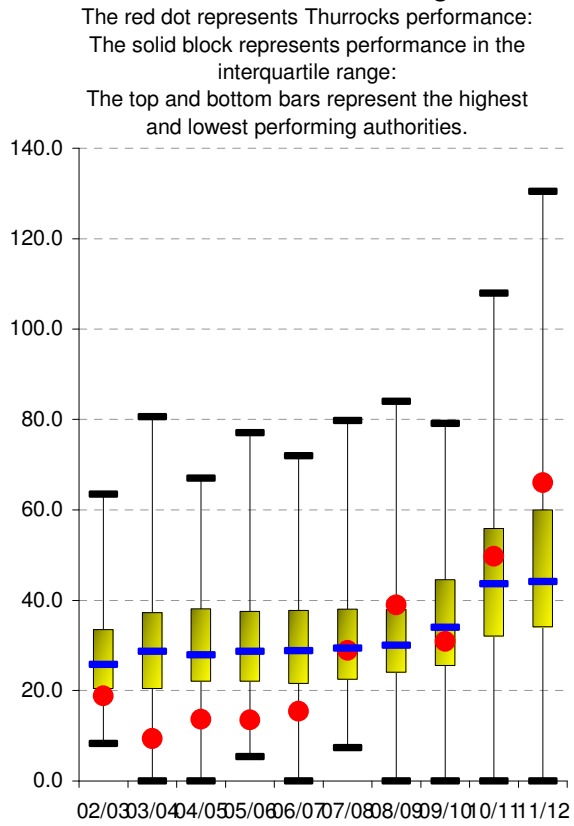
Trend data - Regional groups



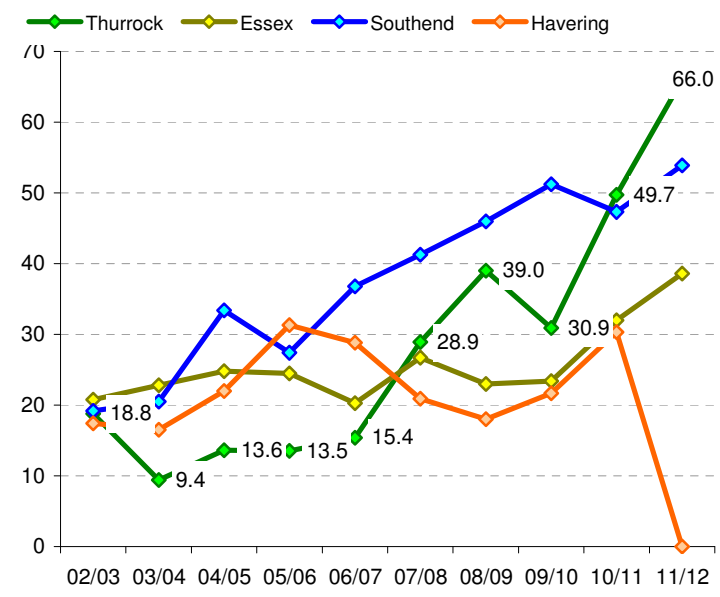
Performance comparison



National Benchmarking



Trend data - Local neighbours



### CP-3: Ceased to be subject of Child protection (CP for 2 years+)

Ind Ref: NI 64

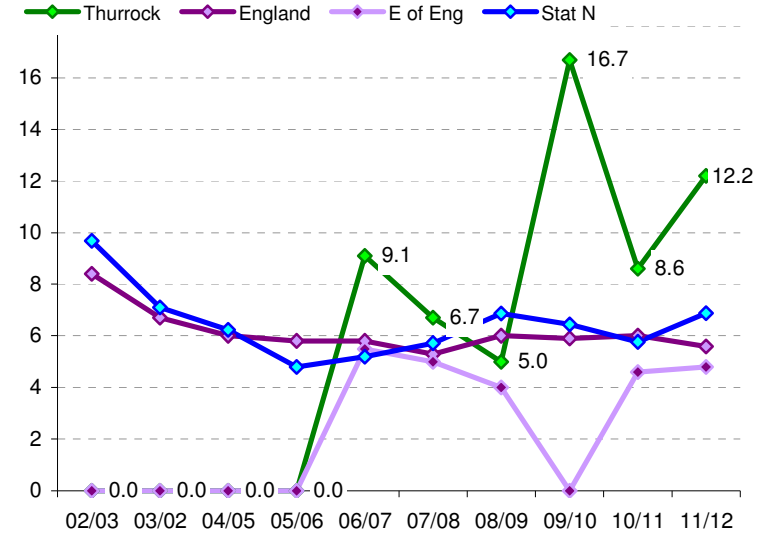
	07/08	08/09	09/10	10/11	11/12	dir	12/13
Thur Target		6.0	6.0	6.0	6.0		6.0
Thurrock	6.7	5.0	16.7	8.6	12.2	↓	
England	5.3	6.0	5.9	6.0	5.6	↑	
E of Eng	5.0	4.0		4.6	4.8	↓	
Stat N	5.7	6.9	6.4	5.8	6.9	↓	

Head of Service: Barbara Foster  
 Responsible officer: Neale Laurie  
 Reporting period: Financial Yr  
 Latest data period: 11/12  
 Next data due: Oct-13  
 Good perf is: Low

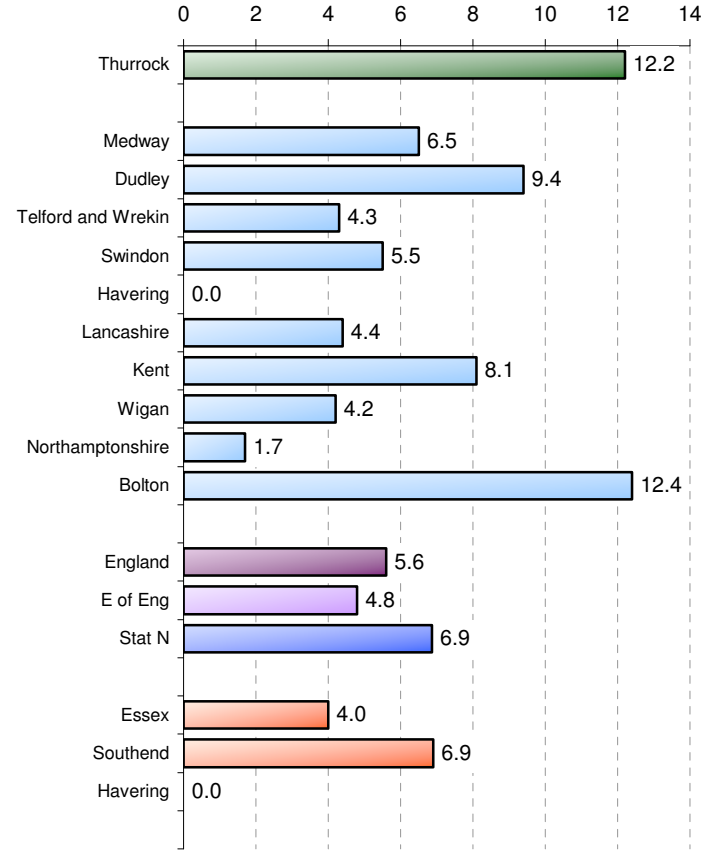
Rank (National) ( /128)	66	37	100	126	119	↑
Rank (SN) ( /11)	5	3	7	8	9	↓
Quartile	3	2	4	4	4	↔

Dif from National:	-1.4	1.0	-10.8	-2.6	-6.6
Dif from target:		1.0	-10.7	-2.6	-6.2

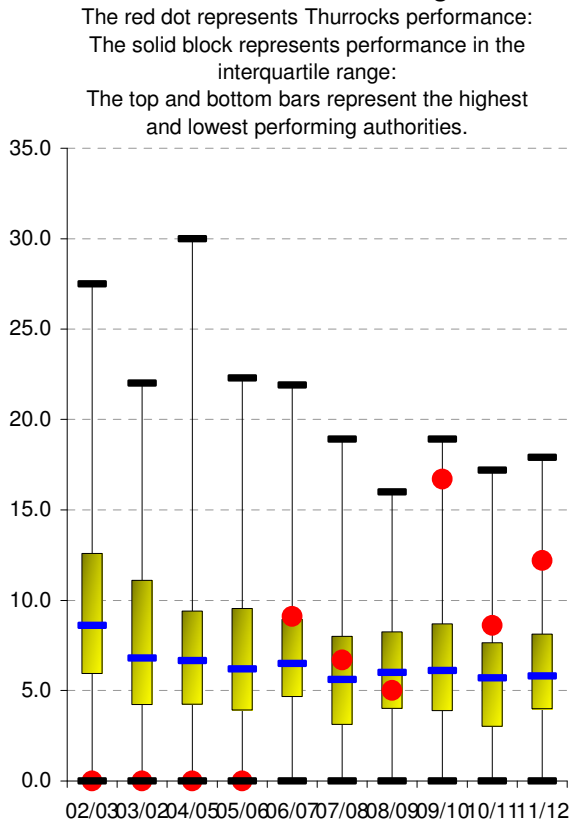
Trend data - Regional groups



Performance comparison



National Benchmarking



Trend data - Local neighbours

